

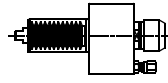


## HANWHA

### STL32/35/38H

HW.000.STL

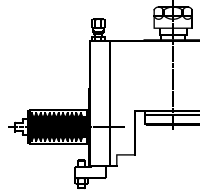
**AXIAL**



ER-20  
RATIO 1:1  
6.000 RPM MAX.

HW.010.STL

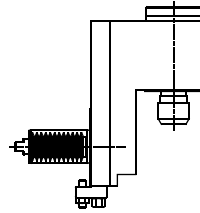
**RADIAL**



ER-20  
RATIO 1:1  
6.000 RPM MAX.

HW.011.STL

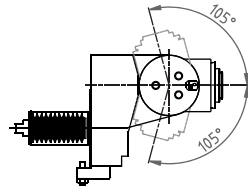
**RADIAL  
SET-BACK**



ER-20  
RATIO 1:1  
6.000 RPM MAX.

HW.021.STL

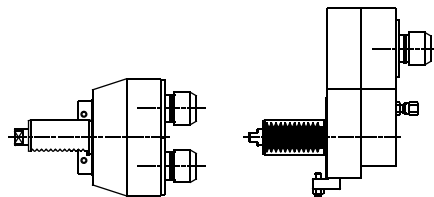
**RADIAL  
ADJUSTABLE**



ER-16  
RATIO 1:1  
6.000 RPM MAX.

HW.023.STLA

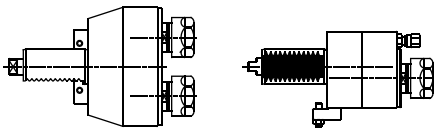
**AXIAL  
2 SPINDLES**



ER-20  
RATIO 1:1  
6.000 RPM MAX.

HW.023.STLB

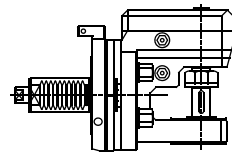
**AXIAL  
2 SPINDLES**



ER-20  
RATIO 1:1  
6.000 RPM MAX.

HW.030.STL

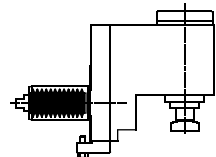
**GEAR  
HOBBING**



ø 16  
RATIO 1:1  
6.000 RPM MAX.

HW.034.STL

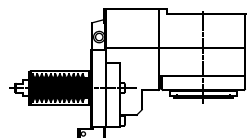
**POLYGON  
MAKER**



POLYGON TOOL  
RATIO 1:1  
6.000 RPM MAX.

HW.035.STL

**THREAD  
WHIRLING ± 15°**



WHIRLING HOLDER  
RATIO 2:1  
6.000 RPM MAX.



**SPECIALS: NO PROBLEM**



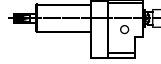
## HANWHA

### XD20/26H

### CROSS DRILL TOOLING

HW.002.XD2

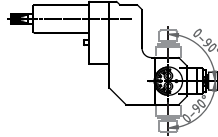
**AXIAL  
SPEEDER**



ER-11  
RATIO 1:3  
15.000 RPM MAX.

HW.021.XD2

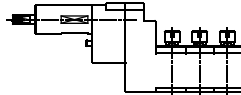
**RADIAL  
ADJUSTABLE**



ER-11  
RATIO 1:1  
8.000 RPM MAX.

HW.029.XD2/3

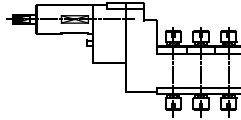
**RADIAL  
3 SPINDLES**



ER-11  
RATIO 1:1  
8.000 RPM MAX

HW.029.XD2/6

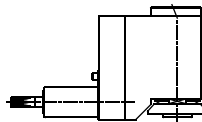
**RADIAL  
6 SPINDLES**



ER-11  
RATIO 1:1  
8.000 RPM MAX.

HW.030.XD2/A

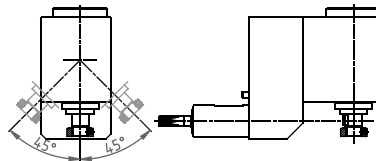
**SAW-MILL**



ø 16  
RATIO 3:1  
4.000 RPM MAX.

HW.030.XD2/B

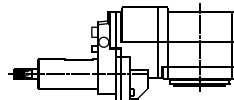
**ADJUSTABLE  
SAW-MILL**



CUTTER HOLDER  
RATIO 3:1  
6.000 RPM MAX.

HW.035.XD2

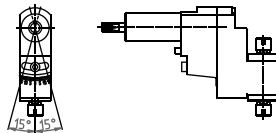
**THREAD  
WHIRLING ± 15°**



WHIRLING HOLDER  
RATIO 1:1  
8.000 RPM MAX.

HW.051.XD2/2A

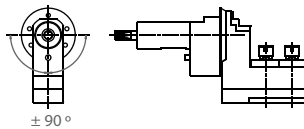
**RADIAL  
ADJUSTABLE**



ER-11  
RATIO 1:1  
9.500 RPM MAX.

HW.051.XD2/2B

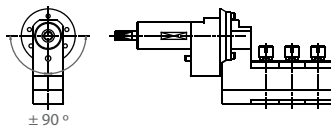
**RADIAL  
ADJUSTABLE  
2 SPINDLES**



ER-11  
RATIO 1:1  
8.000 RPM MAX.

HW.051.XD2/3

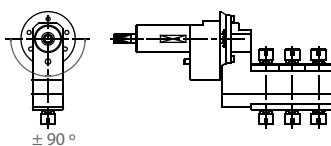
**RADIAL  
ADJUSTABLE  
3 SPINDLES**



ER-11  
RATIO 1:1  
8.000 RPM MAX.

HW.051.XD2/6

**RADIAL  
ADJUSTABLE  
6 SPINDLES**



ER-11  
RATIO 1:1  
8.000 RPM MAX.



**SPECIALS: NO PROBLEM**





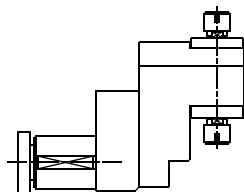
## HANWHA

### XD20/26H

#### BACK END TOOLING

HW.008.XD2/BE

**RADIAL  
DOUBLE  
OUTPUT**

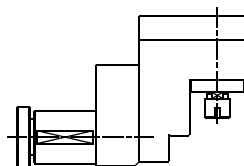


ER-11  
RATIO 1:1  
9.500 RPM MAX.



HW.011.XD2/BE

**RADIAL  
SET-BACK**

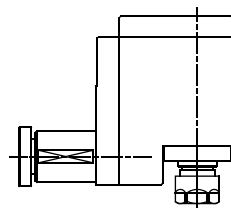


ER-11  
RATIO 1:1  
9.000 RPM MAX.



HW.014.XD2/BE

**RADIAL  
SET-BACK  
REDUCER**

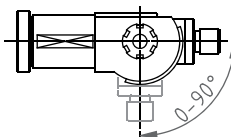


ER-16  
RATIO 1.5:1  
9.000 RPM MAX.



HW.021.XD2/BE

**RADIAL  
ADJUSTABLE**

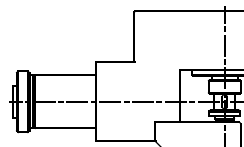


ER-11  
RATIO 1:1  
8.000 RPM MAX.



HW.030.XD2/BE

**SAW-MILL**



ø 13  
RATIO 1:1  
6.000 RPM MAX.

#### SPECIALS: NO PROBLEM

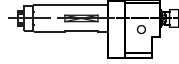


## HANWHA

### XD32/35/38H

HW.002.XD3

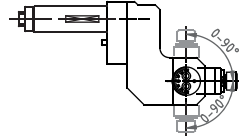
**AXIAL  
SPEEDER**



ER-11  
RATIO 1:3  
15.000 RPM MAX.

HW.021.XD3

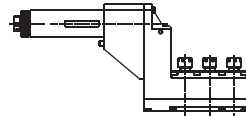
**RADIAL  
ADJUSTABLE**



ER-11  
RATIO 1:1  
8.000 RPM MAX.

HW.029.XD3/3

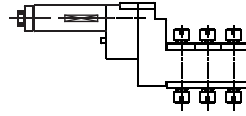
**RADIAL  
3 SPINDLES**



ER-11M  
RATIO 1:1  
8.000 RPM MAX

HW.029.XD3/6

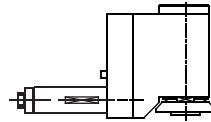
**RADIAL  
6 SPINDLES**



ER-11  
RATIO 1:1  
8.000 RPM MAX.

HW.030.XD3/B

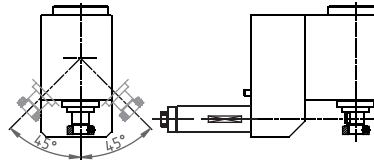
**SAW-MILL**



ø 16  
RATIO 3:1  
4.000 RPM MAX.

HW.030.XD3/B

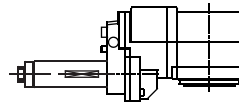
**ADJUSTABLE  
SAW-MILL**



CUTTER HOLDER  
RATIO 3:1  
6.000 RPM MAX.

HW.035.XD3

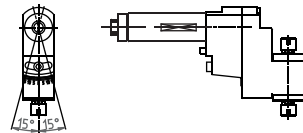
**THREAD  
WHIRLING ± 15°**



WHIRLING HOLDER  
RATIO 1:1  
8.000 RPM MAX.

HW.051.XD3/2A

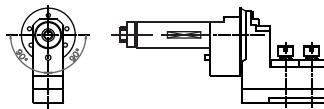
**RADIAL  
ADJUSTABLE**



ER-11  
RATIO 1:1  
9.500 RPM MAX.

HW.051.XD3/2B

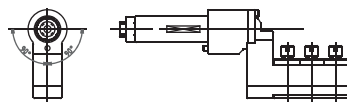
**RADIAL  
ADJUSTABLE  
2 SPINDLES**



ER-11  
RATIO 1:1  
8.000 RPM MAX.

HW.051.XD3/3

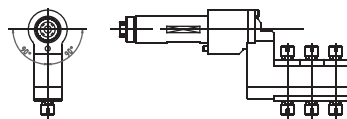
**RADIAL  
ADJUSTABLE  
3 SPINDLES**



ER-11M  
RATIO 1:1  
8.000 RPM MAX.

HW.051.XD3/6

**RADIAL  
ADJUSTABLE  
6 SPINDLES**



ER-11  
RATIO 1:1  
8.000 RPM MAX.



**SPECIALS: NO PROBLEM**

TOOLING FOR STAR - DECO - CITIZEN - MAIER - ESCOMATIC - PFIFFNER - MANURHIN - TSUGAMI - DMG - NEXTURN - WITECH - BENZINGER - ETC. PLEASE ASK FOR LITERATURE

Rec del Molí 11-17 08105 SANT FOST DE CAMPSENTELLES - BARCELONA (SPAIN) TEL.: 34.93.593.36.00 - FAX.: 34.93.570.07.99 - Email.: comercial@madaula.com



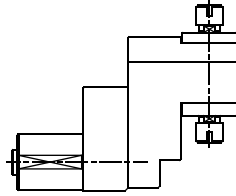


## HANWHA

**SL 26/32/35 HPII**  
**SL 20/26/32 HPD**  
**SL 20/26 S - SL 20/26 H**

HW.008.SL35

**RADIAL  
DOUBLE  
OUTPUT**

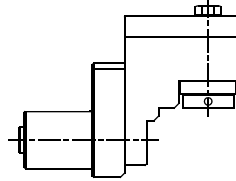


ER-11  
RATIO 1:1  
5000 RPM MAX.



HW.011.SL35

**RADIAL  
SET-BACK**

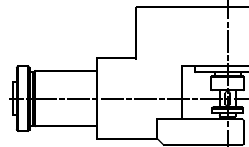


ø 10  
RATIO 1:1  
5000 RPM MAX.



HW.030.SL32HP

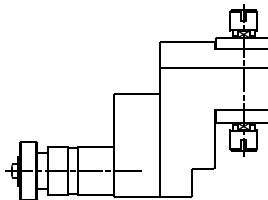
**SAW-MILL**



ø 10  
RATIO 1:1  
6.000 RPM MAX.

HW.008.SL20/26S

**RADIAL  
DOUBLE  
OUTPUT**

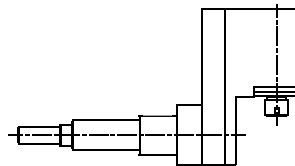


ER-11  
RATIO 1:1  
9.500 RPM MAX



HW.011.SL20/26

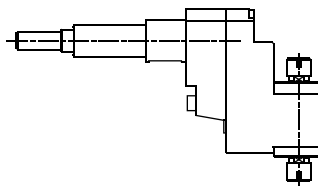
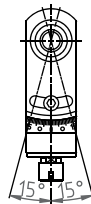
**RADIAL  
SET-BACK**



ER-11  
RATIO 1:1  
9.500 RPM MAX.

HW.051.SL20/26H

**RADIAL  
ADJUSTABLE**



ER-11  
RATIO 1:1  
9.500 RPM MAX.



**SPECIALS: NO PROBLEM**

TOOLING FOR STAR - DECO - CITIZEN - MAIER - ESCOMATIC - PFIFFNER - MANURHIN -  
TSUGAMI - DMG - NEXTURN - WITECH - BENZINGER - ETC. PLEASE ASK FOR LITERATURE

Rec del Molí 11-17 08105 SANT FOST DE CAMPSENTELLES - BARCELONA (SPAIN) TEL.: 34.93.593.36.00 - FAX.: 34.93.570.07.99 - Email.: comercial@madaula.com

