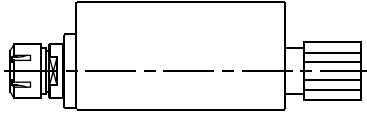




TORNOS DECO

DE.000.20/S
DE.000.20/M
DE.000.20/L

AXIAL
(SHORT, MEDIUM, LONG)



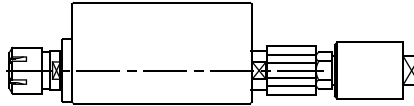
26/20

ER-25
RATIO 1:1
8.000 RPM MAX.



DE.005.20/S
DE.005.20/M
DE.005.20/L

**AXIAL WITH
HIGH PRESSURE
COOLANT THROUGH**
(SHORT, MEDIUM, LONG)

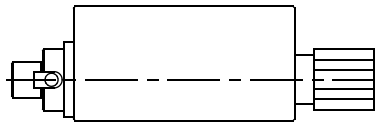


ER-25
RATIO 1:1
8.000 RPM MAX.



DE.038.20

AXIAL SAW-MILL
(SHORT, MEDIUM, LONG)

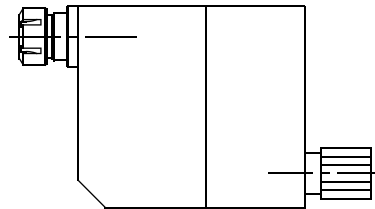


END MILL
RATIO 1:1
8.000 RPM MAX.



DE.001.20

**AXIAL
OFFSET**

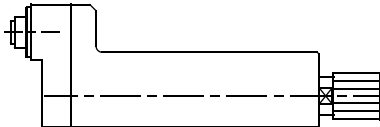


ER-25
RATIO 1:1
8.000 RPM MAX.



DE.002.20

**AXIAL OFFSET
SPEEDER**

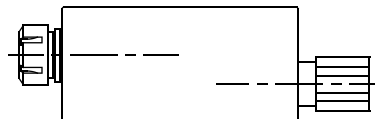


ER-11
RATIO 1:3
24.000 RPM MAX.



DE.003.20/C10

**AXIAL OFFSET
REDUCER 10:1**

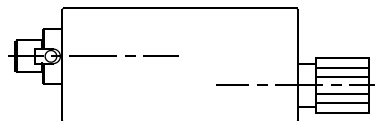


ER-25
RATIO 10:1
8.000 RPM MAX.



DE.003.20/E10

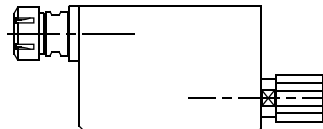
**AXIAL OFFSET
REDUCER 10:1**



END MILL
RATIO 10:1
8.000 RPM MAX.

DE.003.20/C3

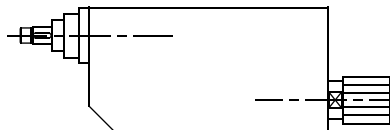
**AXIAL OFFSET
REDUCER 3:1**



ER-25
RATIO 3:1
8.000 RPM MAX.

DE.003.20/E3

**AXIAL OFFSET
REDUCER 3:1**



END MILL
RATIO 3:1
8.000 RPM MAX.

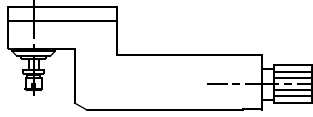


SPECIALS: NO PROBLEM



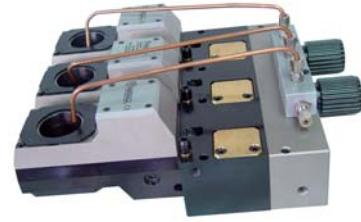
TORNOS DECO

DE.011.20 **RADIAL 90°**

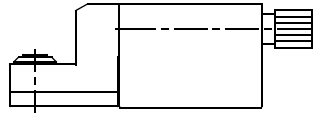


26/20

ER-11
RATIO 1:1
8.000 RPM MAX.



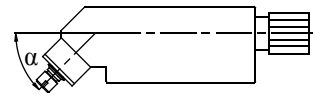
DE.011.20/S **RADIAL 90°
(SUBSPINDLE)**



ER-11
RATIO 1:1
8.000 RPM MAX.



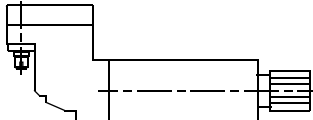
DE.012.20 **FIXED ANGLE
(ANY ANGLE)**



ER-11
RATIO 1:1
8.000 RPM MAX.



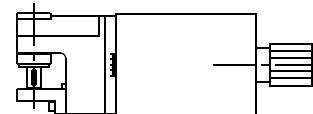
DE.013.20 **RADIAL 90°
SPEEDER**



ER-11
RATIO 1:4
24.000 RPM MAX.



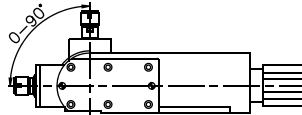
DE.015.20 **ADJUSTABLE
MILLING CUTTER
AND GEAR HOBBING**



END MILL
RATIO 1:1
8.000 RPM MAX.

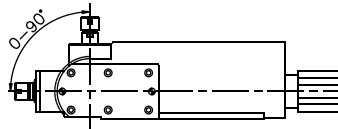


DE.021.20/S **RADIAL
ADJUSTABLE
SHORT**



ER-11
RATIO 1:1
8.000 RPM MAX.

DE.021.20/L **RADIAL
ADJUSTABLE
LONG**



ER-11
RATIO 1:1
8.000 RPM MAX.

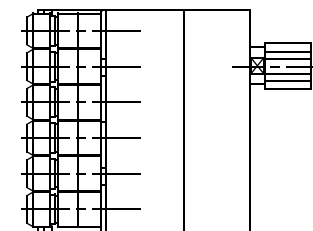


DE.023.20/3 **AXIAL
3 SPINDLES**



ER-11
RATIO 1:1
8.000 RPM MAX.

DE.023.20/6 **AXIAL
6 SPINDLES**



ER-11
RATIO 1:1
8.000 RPM MAX.

SPECIALS: NO PROBLEM

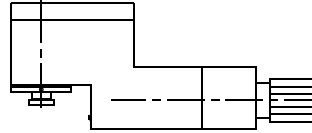




TORNOS DECO

DE.034.20
DE..034.20/R

**POLYGON MAKER
(OPTIONAL REDUCER)**



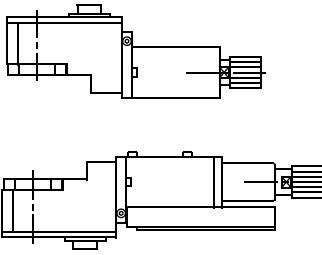
26/20

POLYGON TOOL
RATIO 1:1/2:1
8.000 RPM MAX.



DE.035.20
DE.035.20/S

**THREAD
WHIRLING ± 15°
(STANDARD, SUBSPINDLE)**

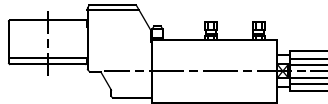


ANY TYPE OF
CUTTING HEAD
RATIO 1:1
6.000 RPM MAX.



DE.035.20/30

**THREAD
WHIRLING ± 30°**

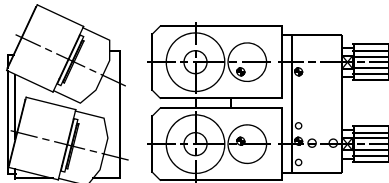


ANY TYPE OF
CUTTING HEAD
RATIO 1:1
6.000 RPM MAX.

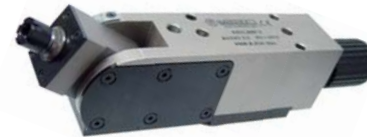


DE.035.20/2

**THREAD
WHIRLING ± 25°
DOUBLE HEADED**

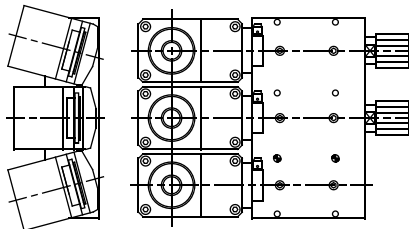


ANY TYPE OF
CUTTING HEAD
RATIO 1:1
6.000 RPM MAX.

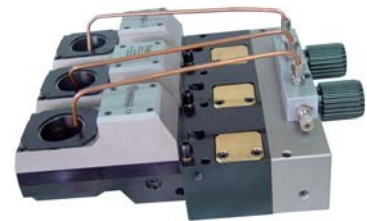


DE.035.20/3

**THREAD
WHIRLING ± 15°
TRIPLE HEADED**

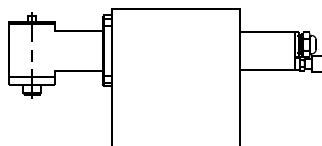


ANY TYPE OF
CUTTING HEAD
RATIO 1:1
6.000 RPM MAX.



DE.HF.20

**ATTACHMENT +
ANGLE HEAD FOR HIGH
FREQUENCY SPINDLE**



ER-8
RATIO 1:1
24.000 RPM MAX.



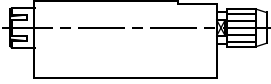
SPECIALS: NO PROBLEM





TORNOS DECO

DE.000.13/S
DE.000.13/M
DE.000.13/L **AXIAL**
(SHORT, MEDIUM, LONG)

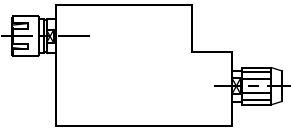


13/EvoDECO 16

ER-20
RATIO 1:1
10.000 RPM MAX.



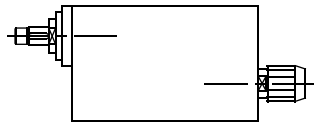
DE.001.13 **AXIAL OFFSET**



ER-20
RATIO 1:1
10.000 RPM MAX.

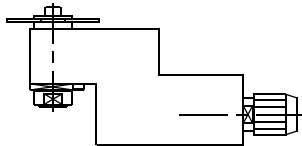


DE.003.13 **AXIAL OFFSET REDUCER**



END MILL or ER-20
RATIO 3:1
10.000 RPM MAX.

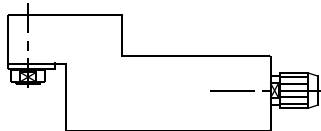
DE.008.13 **RADIAL DOUBLE OUTPUT**



ER-11 + SAW CUTTER
RATIO 1:1
10.000 RPM MAX.

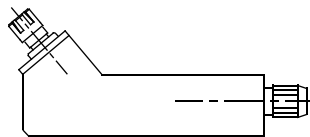


DE.011.13 **RADIAL 90°**



ER-11
RATIO 1:1
10.000 RPM MAX.

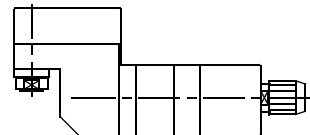
DE.012.13 **FIXED ANGLE (ANY ANGLE)**



ER-16 or ER-20
RATIO 1:1
10.000 RPM MAX.

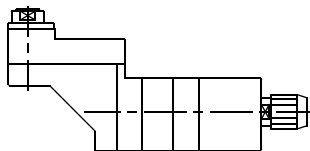


DE.013.13 **RADIAL 90° SPEEDER**



ER-11
RATIO 1:3
24.000 RPM MAX.

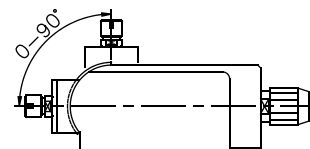
DE.033.13 **RADIAL SUBSPINDLE**



ER-11
RATIO 1:1
10.000 RPM MAX.

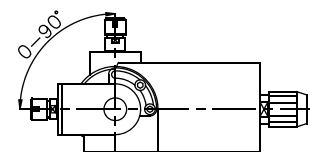


DE.021.13 **RADIAL ADJUSTABLE 0-90°**



ER-11
RATIO 1:1
10.000 RPM MAX.

DE.021.13/S **RADIAL ADJUSTABLE 0-90°**



ER-11
RATIO 1:1
10.000 RPM MAX.



SPECIALS: NO PROBLEM

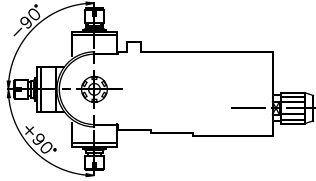




TORNOS DECO

13/EvoDECO 16

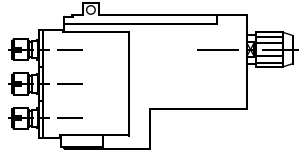
DE.021.13/C
**RADIAL
ADJUSTABLE
± 90°**



ER-11
RATIO 1:1
10.000 RPM MAX.



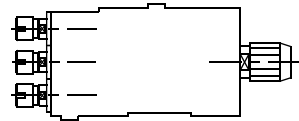
DE.021.13/3
**RADIAL
ADJUSTABLE
3 SPINDLES**



ER-11
RATIO 1:1
10.000 RPM MAX.

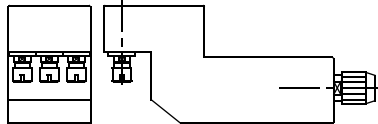


DE.023.13
**AXIAL
3 SPINDLES**



ER-11
RATIO 1:1
10.000 RPM MAX.

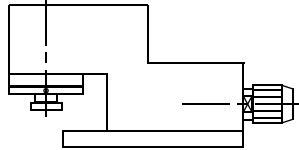
DE.029.13
**RADIAL
3 SPINDLES**



ER-11
RATIO 1:1
10.000 RPM MAX.

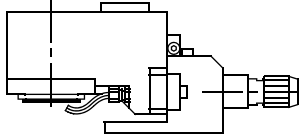


DE.034.13
**POLYGON
MAKER**



POLYGON TOOL
RATIO 1:1
10.000 RPM MAX.

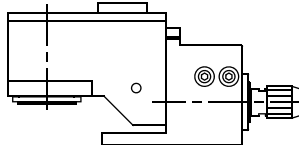
DE.035.13/15
**THREAD
WHIRLING ± 15°**



ANY TYPE OF
CUTTING HEAD
RATIO 1:1
6.000 RPM MAX.

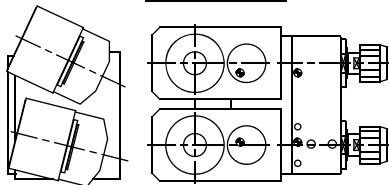


DE.035.13/25
**THREAD
WHIRLING ± 25°**



ANY TYPE OF
CUTTING HEAD
RATIO 1:1
6.000 RPM MAX.

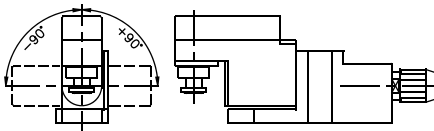
DE.035.13/2
**THREAD
WHIRLING ± 25°
DOUBLE HEADED**



ANY TYPE OF
CUTTING HEAD
RATIO 1:1
6.000 RPM MAX.

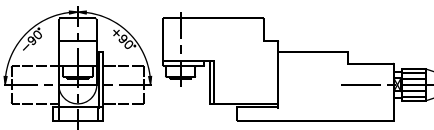


DE.051.13/A
**RADIAL
ADJUSTABLE
"Y" AXIS ± 90°**



POLYGON TOOL
RATIO 1:1
10.000 RPM MAX.

DE.051.13/B
**RADIAL
ADJUSTABLE
"Y" AXIS ± 90°**



ER-11
RATIO 1:1
10.000 RPM MAX.



SPECIALS: NO PROBLEM

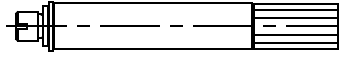


TORNOS DECO

7/10/EvoDECO 10

DE.000.10/C

AXIAL

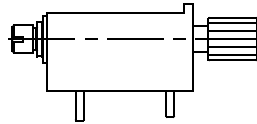


ER-11 or END MILL
RATIO 1:1
12.000 RPM MAX.



DE.000.10

AXIAL GANG

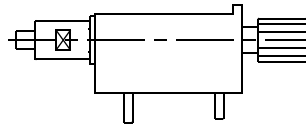


ER-11
RATIO 1:1
12.000 RPM MAX.



DE.038.10

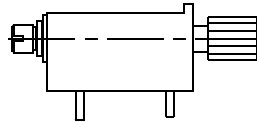
**AXIAL
SAW-MILL**



END MILL
RATIO 1:1
12.000 RPM MAX.

DE.002.10

**AXIAL
SPEEDER
GANG**

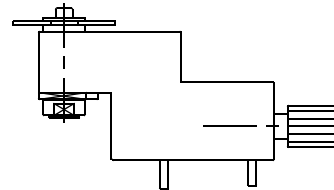


ER-11
RATIO 1:4
24.000 RPM MAX.



DE.008.10

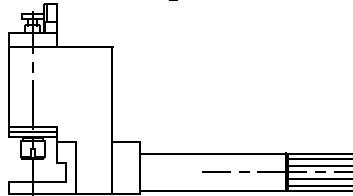
**RADIAL
DOUBLE
OUTPUT**



ER-11 + SAW CUTTER
RATIO 1:1
12.000 RPM MAX.

DE.011.10/C

RADIAL 90°

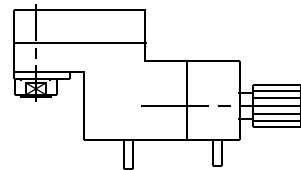


ER-11
RATIO 1:1
12.000 RPM MAX.



DE.011.10

**RADIAL 90°
GANG**

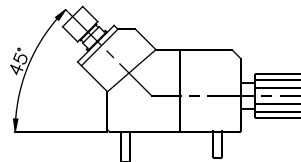


ER-11
RATIO 1:1
12.000 RPM MAX.



DE.012.10

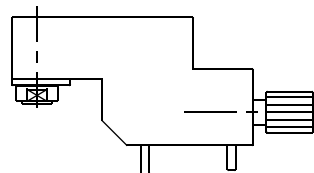
**FIXED ANGLE
(ANY ANGLE)**



ER-11
RATIO 1:1
12.000 RPM MAX.

DE.013.10

**RADIAL 90°
SPEEDER**



ER-11
RATIO 1:3
24.000 RPM MAX.



SPECIALS: NO PROBLEM

TOOLING FOR **BENZINGER - CITIZEN - DMG - ESCOMATIC - HANWHA - MAIER - MANURHIN - NEXTURN - PFIFFNER - STAR - TSUGAMI - WITECH - ETC.** PLEASE ASK FOR LITERATURE

Rec del Molí 11-17 08105 SANT FOST DE CAMSENTELLES - BARCELONA (SPAIN) TEL.: 34.93.593.36.00 - FAX.: 34.93.570.07.99 - Email.: comercial@madaula.com



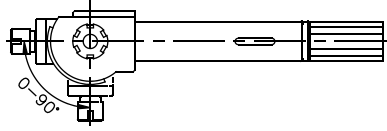


TORNOS DECO

7/10/EvoDECO 10

DE.021.10/C

**RADIAL
ADJUSTABLE**

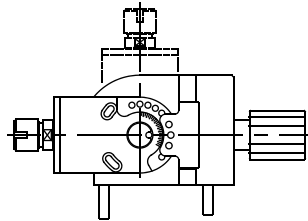


ER-11
RATIO 1:1
12.000 RPM MAX.



DE.021.10

**RADIAL
ADJUSTABLE
GANG**

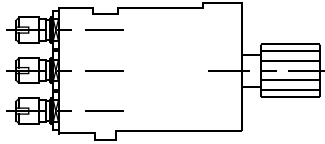


ER-11
RATIO 1:1
12.000 RPM MAX.



DE.023.10/3

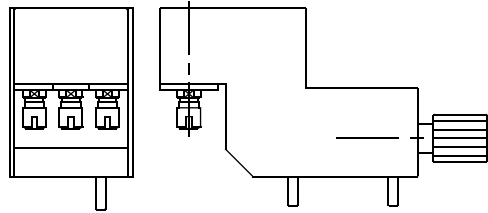
**AXIAL
3 SPINDLES**



ER-11
RATIO 1:1
12.000 RPM MAX.

DE.029.10

**RADIAL
3 SPINDLES**

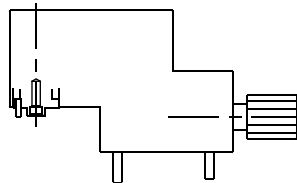


ER-8
RATIO 1:1
12.000 RPM MAX.



DE.034.10

**POLYGON
MAKER**

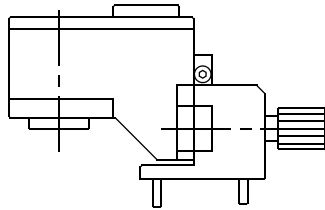


POLYGON TOOL
RATIO 1:1
12.000 RPM MAX.



DE.035.10

**THREAD
WHIRLING ± 22.5°**

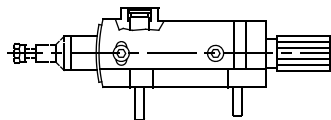


ANY TYPE OF
CUTTING HEAD
RATIO 1:1
6.000 RPM MAX.



DE.036.10

**HIGH PRECISION
GEAR HOBGING**



GEAR CUTTER
RATIO 1:1
12.000 RPM MAX.



DE.050.10

AXIAL "Y" AXIS



ER-11
RATIO 1:1
12.000 RPM MAX.

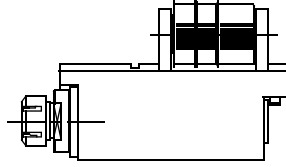
SPECIALS: NO PROBLEM



TORNOS SIGMA 20

DE.000.S20/S
DE.000.S20/M
DE.000.S20/L

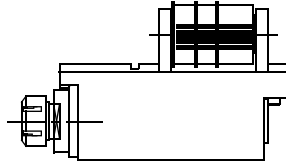
AXIAL
(SHORT, MEDIUM, LONG)



ER-25
RATIO 1:1
10.000 RPM MAX.

DE.003.S20/S
DE.003.S20/M
DE.003.S20/L

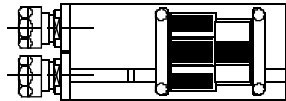
AXIAL REDUCER
(SHORT, MEDIUM, LONG)



ER-25
RATIO 4:1
2.500 RPM MAX.

DE.023.S20/S
DE.023.S20/M
DE.023.S20/L

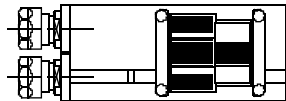
AXIAL DOUBLE
OUTPUT
(SHORT, MEDIUM, LONG)



ER-20
RATIO 1:1
10.000 RPM MAX.

DE.023.S20/SX
DE.023.S20/MX
DE.023.S20/LX

AXIAL DOUBLE
OUTPUT SPEEDER
(SHORT, MEDIUM, LONG)

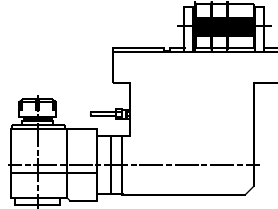


ER-20
RATIO 1:2
20.000 RPM MAX.



DE.010.S20

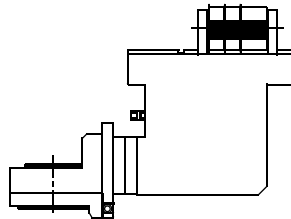
RADIAL



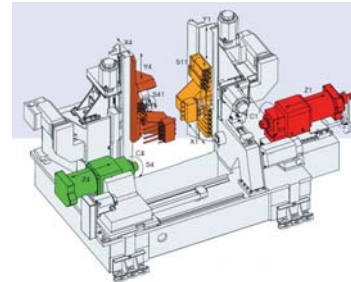
ER-25
RATIO 1:1
10.000 RPM MAX.

DE.035.S20

THREAD
WHIRLING ± 30°

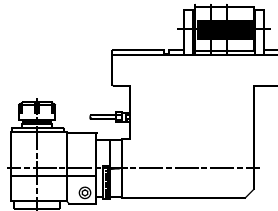


CUTTING HEAD
RATIO 1:1
6.000 RPM MAX.



DE.051.S20

RADIAL
ADJUSTABLE ± 180°



ER-25
RATIO 1:1
10.000 RPM MAX.



AVAILABLE WITH HIGH PRESSURE COOLANT THROUGH

SPECIALS: NO PROBLEM

TOOLING FOR **BENZINGER - CITIZEN - DMG - ESCOMATIC - HANWHA - MAIER - MANURHIN - NEXTURN - PFIFFNER - STAR - TSUGAMI - WITECH - ETC.** PLEASE ASK FOR LITERATURE

Rec del Molí 11-17 08105 SANT FOST DE CAMPSENTELLES - BARCELONA (SPAIN) TEL.: 34.93.593.36.00 - FAX.: 34.93.570.07.99 - Email.: comercial@madaula.com



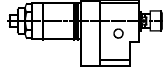


TORNOS GAMMA

20/5 - 20/6

CROSS DRILL TOOLING

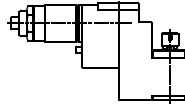
GM.002.20CD **AXIAL SPEEDER**



ER-11
RATIO 1:3
15.000 RPM MAX.

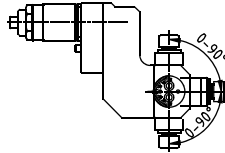


GM.011.20CD **RADIAL SET-BACK**

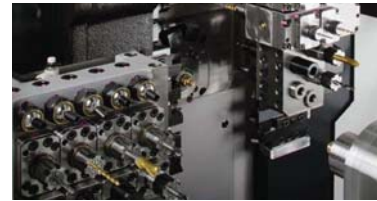


ER-16
RATIO 1:1
8.000 RPM MAX.

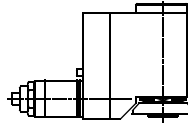
GM.021.20CD **RADIAL ADJUSTABLE**



ER-11
RATIO 1:1
8.000 RPM MAX.



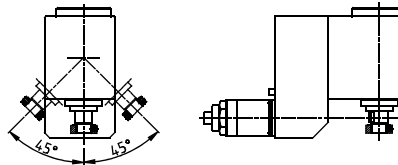
GM.030.20CD **SAW-MILL / POLYGON MAKER**



ø 16
RATIO 3:1
4.000 RPM MAX.

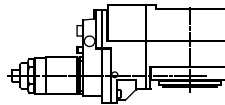


GM.030.20ACD **ADJUSTABLE SAW-MILL**



CUTTER HOLDER
RATIO 3:1
6.000 RPM MAX.

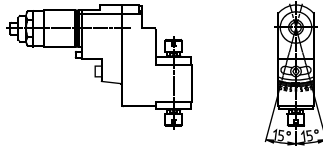
GM.035.20CD **THREAD WHIRLING ± 15°**



WHIRLING HOLDER
RATIO 1:1
8.000 RPM MAX.

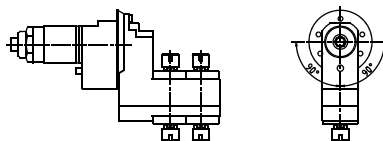


GM.051.20CD **RADIAL ADJUSTABLE 2 SPINDLES**

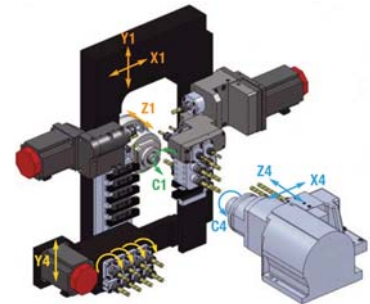


ER-16
RATIO 1:1
9.500 RPM MAX.

GM.051.202CD **RADIAL ADJUSTABLE 4 SPINDLES**



ER-16
RATIO 1:1
8.000 RPM MAX.



SPECIALS: NO PROBLEM



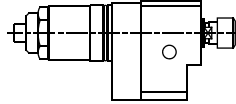
TORNOS GAMMA

20/5 - 20/6

BACK END TOOLING

GM.002.20BE

**AXIAL
SPEEDER**

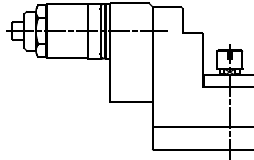


ER-11
RATIO 1:3
15.000 RPM MAX.

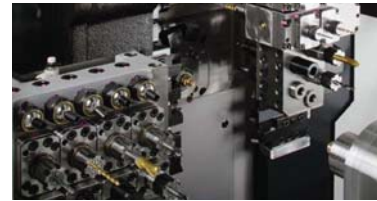


GM.011.20BE

**RADIAL
SET-BACK**

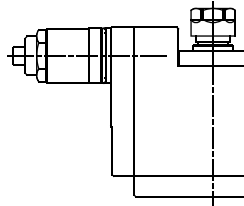


ER-11
RATIO 1:1
9.000 RPM MAX.



GM.014.20BE

**RADIAL
SET-BACK
REDUCER**

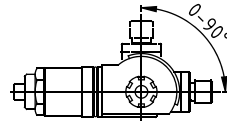


ER-16
RATIO 1.5:1
9.000 RPM MAX.



GM.021.20BE

**RADIAL
ADJUSTABLE**

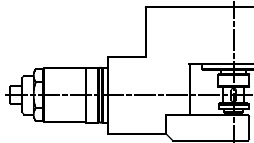


ER-11
RATIO 1:1
8.000 RPM MAX.

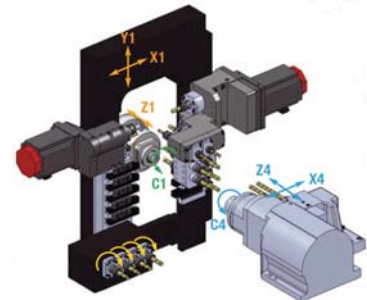


GM.030.20BE

SAW-MILL



ø 13
RATIO 1:1
6.000 RPM MAX.



SPECIALS: NO PROBLEM

