



**GANG
TOOLING
Ø 31**

CITIZEN

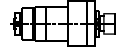
A20 VII

CITIZEN ref.

CZ.000.A20

BSC-210

AXIAL

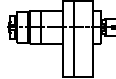


ER-11
RATIO 1:1
6.000 RPM MAX.

CZ.002.A20

BSC-510

**AXIAL
SPEEDER**

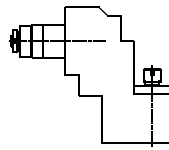


ER-11
RATIO 1:3
18.000 RPM MAX.

CZ.011.A20

BSE-107

**RADIAL
SET-BACK**

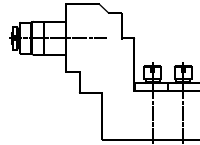


ER-11
RATIO 1:1
6.000 RPM MAX.

CZ.029.A20

BSE-207

**RADIAL
2 SPINDLES**

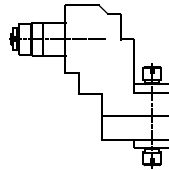


ER-11
RATIO 1:1
6.000 RPM MAX.

CZ.008.A20

BSE-1007

**RADIAL
DOUBLE
OUTPUT**

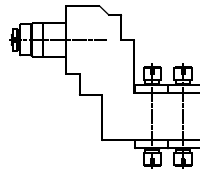


ER-11
RATIO 1:1
6.000 RPM MAX.

CZ.029.A20-4

BSE-2007

**RADIAL
4 SPINDLES**

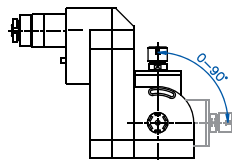


ER-11
RATIO 1:1
6.000 RPM MAX.

CZ.021.A20

BSA-107

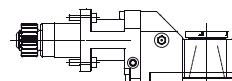
**RADIAL
ADJUSTABLE**



ER-11
RATIO 1:1
5.000 RPM MAX.

CZ.035.A20

**THREAD
WHIRLING ± 12,5°**



CUTTING HEAD
RATIO 1:1
6.000 RPM MAX.



SPECIALS: NO PROBLEM





**GANG
TOOLING
Ø 31**

CITIZEN

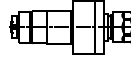
A32 VII

CITIZEN ref.

CZ.000.A32

GSC-1110

AXIAL



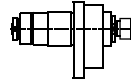
ER-16
RATIO 1:1
5.000 RPM MAX.



CZ.002.A32

BSC-610

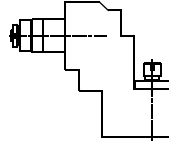
**AXIAL
SPEEDER**



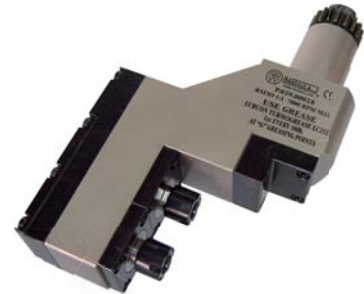
ER-11
RATIO 1:3
15.000 RPM MAX.

CZ.011.A32

**RADIAL
SET-BACK**



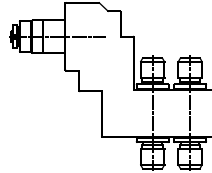
ER-16
RATIO 1:1
5.000 RPM MAX.



CZ.029.A32-4

BSE-3207

**RADIAL
4 SPINDLES**

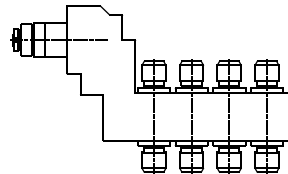


ER-16
RATIO 1:1
5.000 RPM MAX.

CZ.029.A32-8

BSE-3208

**RADIAL
8 SPINDLES**

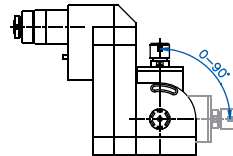


ER-16
RATIO 1:1
5.000 RPM MAX.

CZ.021.A32

BSA-3107

**RADIAL
ADJUSTABLE**

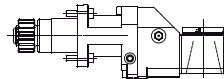


ER-11
RATIO 1:1
5.000 RPM MAX.



CZ.035.A20

**THREAD
WHIRLING ± 12,5°**



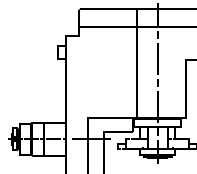
CUTTING HEAD
RATIO 1:1
6.000 RPM MAX.



CZ.034.A32

BSF-509

**POLYGON
MAKER**



Ø10
RATIO 1:1
5.000 RPM MAX.

SPECIALS: NO PROBLEM





**GANG
TOOLING
Ø 24**

CITIZEN ref.

CITIZEN

CZ.000.K12/K16	GSC-807
CZ.002.K12/K16	GSC-807 (3X)
CZ.023.K12/K16	GSC-860
CZ.23.K12/K16S	GSC--860S
CZ.011.K12/K16	GSE-2607
CZ.013.K12/16	GSE-2607-2x
CZ.033.K12/K16	GSE-2707
CZ.013.K12/K16S	GSE-2707 (2X)
CZ.008.K12/K16	GSE-2807
CZ.008.K12/K16S	GSE-2307-2x
CZ.029.K12/K16-3	
CZ.029.K12/K16-4	GSE-2007

AXIAL

**AXIAL
SPEEDER**

**AXIAL
DOUBLE
OUTPUT
AXIAL
DOUBLE
OUTPUT
SPEEDER**

**RADIAL
SET-BACK**

**RADIAL
SET-BACK
SPEEDER**

**RADIAL
SUBSPINDLE**

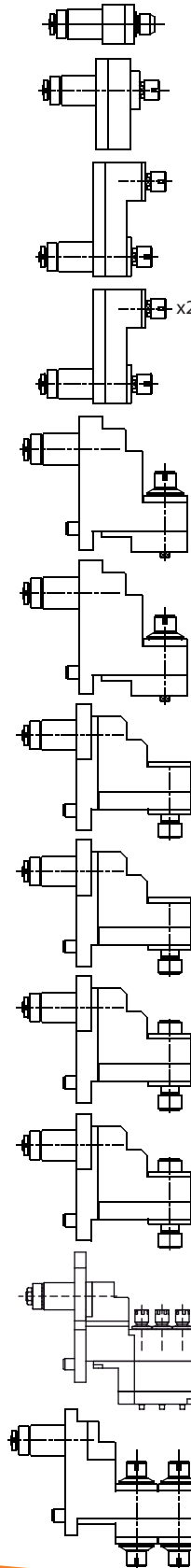
**RADIAL
SUBSPINDLE
SPEEDER**

**RADIAL
DOUBLE
OUTPUT**

**RADIAL
DOUBLE
OUTPUT
SPEEDER**

**RADIAL
3 SPINDLES**

**RADIAL
4 SPINDLES**



K12/K16

ER-11
RATIO 1:1
6.000 RPM MAX.

ER-11
RATIO 1:3
18.000 RPM MAX.

ER-11
RATIO 1:1
6.000 RPM MAX.

ER-11
RATIO 1:1 / 1:2
6.000 / 12.000 RPM MAX.

ER-11
RATIO 1:1
6.000 RPM MAX.

ER-11
RATIO 1:2
12.000 RPM MAX.

ER-11
RATIO 1:1
6.000 RPM MAX.

ER-11
RATIO 1:2
12.000 RPM MAX.

ER-11
RATIO 1:1
6.000 RPM MAX.

ER-11
RATIO 1:2
12.000 RPM MAX.

ER-8
RATIO 1:1
6.000 RPM MAX.

ER-11
RATIO 1:1
6.000 RPM MAX.



SPECIALS: NO PROBLEM





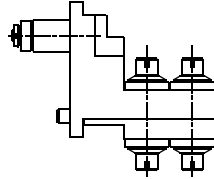
**GANG
TOOLING
Ø 24**

CITIZEN

K12/K16

CITIZEN ref.

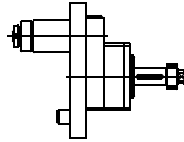
CZ.029.K12/K16-4S GSE-2507-2x **RADIAL
4 SPINDLES
SPEEDER**



ER-11
RATIO 1:2
12.000 RPM MAX.



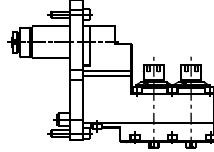
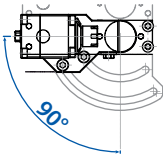
CZ.038.K12/K16 GSS-350 **AXIAL
SAW-MILL
REDUCER**



Ø 13
RATIO 2:1
3.000 RPM MAX.

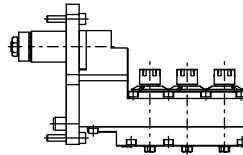
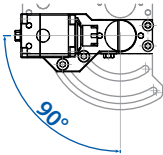


CZ.051.K12/K16-A **RADIAL
DOUBLE
ADJUSTABLE 0-90°**



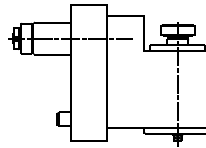
ER-11
RATIO 1:1
6.000 RPM MAX.

CZ.051.K12/K16-B **RADIAL
TRIPLE
ADJUSTABLE 0-90°**

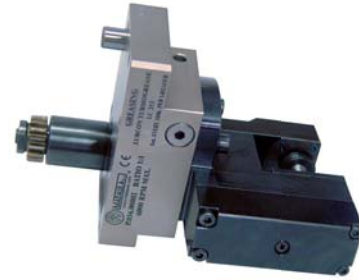


ER-8
RATIO 1:1
6.000 RPM MAX.

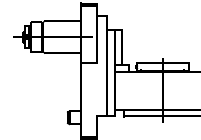
CZ.034.K12/K16 **POLYGON
MAKER
REDUCER**



Ø 13
RATIO 3:1
2.000 RPM MAX.

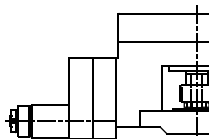


CZ.035.K12/K16 GSW-101 **THREAD
WHIRLING ± 15°**



CUTTING HEAD
RATIO 1:1
6.000 RPM MAX.

CZ.036.K12/K16 **GEAR
HOBBING**



Ø 8
RATIO 1:1
6.000 RPM MAX.



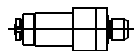
**BACKSPINDLE
UNITS**

CITIZEN

K12/K16

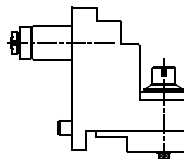
CITIZEN ref.

CZ.000.K12 POST GSC-1107 **AXIAL**



ER-11
RATIO 1:1
6.000 RPM MAX.

CZ.011.K12 POST GSS-1430 **RADIAL**



ER-11
RATIO 1:1
6.000 RPM MAX.



SPECIALS: NO PROBLEM





GANG TOOLING
Ø 25

CITIZEN

C16, M12/M16

	<i>CITIZEN ref.</i>			
CZ.000.C16-A	GSC-607	AXIAL		ER-11 RATIO 1:1 8.000 RPM MAX.
CZ.000.C16-B		AXIAL		ER-16 RATIO 1:1 8.000 RPM MAX.
CZ.001.C16-A		AXIAL OFFSET		ER-16 RATIO 1:1 8.000 RPM MAX.
CZ.001.C16-B		AXIAL OFFSET		ER-16A RATIO 1:1 8.000 RPM MAX.
CZ.002.C16	GSC-607-3x	AXIAL SPEEDER		ER-11 RATIO 1:3 15.000 RPM MAX.
CZ.008.C16	GSE-707	RADIAL 2 SPINDLES		ER-11 RATIO 1:1 8.000 RPM MAX.
CZ.011.C16-A	GSE-507	RADIAL SET-BACK		ER-11 RATIO 1:1 8.000 RPM MAX.
CZ.011.C16-B	GSE-508	RADIAL SET-BACK		ER-11 RATIO 1:1 8.000 RPM MAX.
CZ.013.C16	GSE-507-2x	RADIAL SET-BACK SPEEDER		ER-11 RATIO 1:2 12.000 RPM MAX.
CZ.021.C16	GSA-407	RADIAL ADJUSTABLE		ER-11 RATIO 1:1 8.000 RPM MAX.
CZ.035.C16	LSW-424	THREAD WHIRLING ± 12.5°		CUTTING HEAD RATIO 1:1 6.000 RPM MAX.



GANG TOOLING
Ø 25

CITIZEN

L20

	<i>CITIZEN ref.</i>			
CZ.011.L20		RADIAL SET-BACK		ER-11 RATIO 1:1 5.000 RPM MAX.



SPECIALS: NO PROBLEM





**GANG
TOOLING
Ø 32**

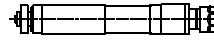
CITIZEN

L16/L20

CITIZEN ref.

CZ.000.L16/L20 GSC-510

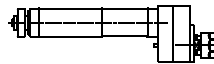
AXIAL



ER-16
RATIO 1:1
9.000 RPM MAX.

CZ.001.L16/L20

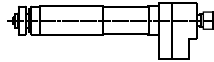
**AXIAL
OFFSET**



ER-16
RATIO 1:1
9.000 RPM MAX.

CZ.002.L16/L20 GSC-510-3x

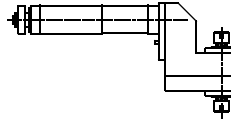
**AXIAL
SPEEDER**



ER-11
RATIO 1:3
15.000 RPM MAX.

CZ.008.L16/L20 GSE-306-DE312

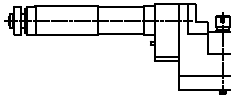
**RADIAL
DOUBLE
OUTPUT**



ER-11
RATIO 1:3
15.000 RPM MAX.

CZ.011.L16/L20 GSE-306

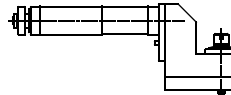
**RADIAL
SET-BACK**



ER-11
RATIO 1:1
9.000 RPM MAX.

CZ.013.L16/L20

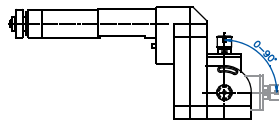
**RADIAL
SPEEDER**



ER-11
RATIO 1:3
15.000 RPM MAX.

CZ.021.L16/L20S

**RADIAL
ADJUSTABLE
SPEEDER**



ER-11
RATIO 1:2.5
15.000 RPM MAX.



SPECIALS: NO PROBLEM





GANG TOOLING
Ø 32

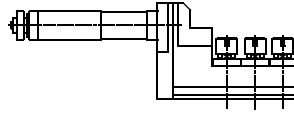
CITIZEN

L16/L20

CITIZEN ref.

CZ.029.L16/L20-3 GSE-1110

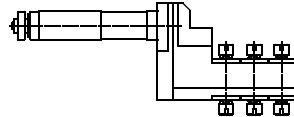
RADIAL
3 SPINDLES



ER-11
RATIO 1:1
9.000 RPM MAX.

CZ.029.L16/L20-6 GSE-1307

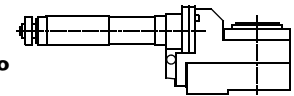
RADIAL
6 SPINDLES



ER-11
RATIO 1:1
9.000 RPM MAX.

CZ.035.L16/L20 LSW-101

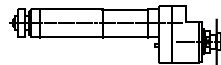
THREAD WHIRLING ± 15°



CUTTING HEAD
RATIO 1:1
6.000 RPM MAX.

CZ.038.L16/L20 GSS-510

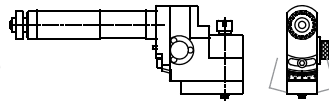
AXIAL
SAW-MILL



Ø 13
RATIO 2:1
5.000 RPM MAX.

CZ.051.L16/L20-A

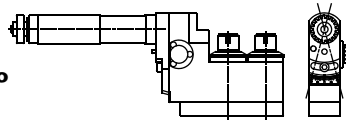
RADIAL
"Y" AXIS ± 15°



ER-11
RATIO 1:1
9.000 RPM MAX.

CZ.051.L16/L20-B CSMCC-0233

RADIAL
"Y" AXIS ± 15°



ER-11
RATIO 1:1
9.000 RPM MAX.



BACKSPINDLE UNITS

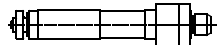
CITIZEN ref.

CITIZEN

L16/L20

CZ.000.L16/L20 POST

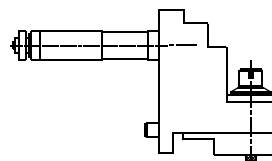
AXIAL



ER-11
RATIO 1:1
6.000 RPM MAX.

CZ.011.L16/L20 POST

RADIAL



ER-11
RATIO 1:1
6.000 RPM MAX.



SPECIALS: NO PROBLEM





**GANG
TOOLING
Ø 32**

CITIZEN

L25/L32

CITIZEN ref.	AXIAL	ER-16 RATIO 1:1 9.000 RPM MAX.
CZ.000.L25/L32	GSE-310	
CZ.002.L25/L32	GSE-310-3x	ER-11 RATIO 1:3 15.000 RPM MAX.
CZ.008.L25/L32	GSX-310	ER-11 RATIO 1:1 9.000 RPM MAX.
CZ.008.L25/L32S	GSX-310-3x	ER-11 RATIO 1:3 15.000 RPM MAX.
CZ.011.L25/L32	RADIAL SET-BACK	ER-11 RATIO 1:1 9.000 RPM MAX.
CZ.011.L25/L32	RADIAL SET-BACK SPEEDER	ER-11 RATIO 1:3 15.000 RPM MAX.
CZ.021.L25/L32	RADIAL ADJUSTABLE SPEEDER	ER-11 RATIO 1:2.5 15.000 RPM MAX.
CZ.029.L25/L32	GSE-1307	ER-11 RATIO 1:1 9.000 RPM MAX.
CZ.035.L25/L32	LSW-101	CUTTING HEAD RATIO 1:1 6.000 RPM MAX.
CZ.038.L25/L32	GSS-510	Ø 13 RATIO 2:1 5.000 RPM MAX.
CZ.051.L25/L32		ER-11 RATIO 1:1 9.000 RPM MAX.



SPECIALS: NO PROBLEM




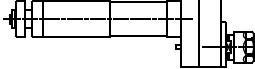
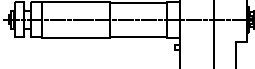
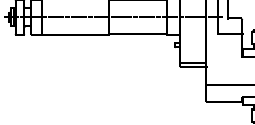
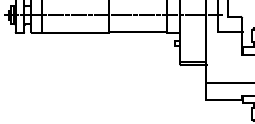
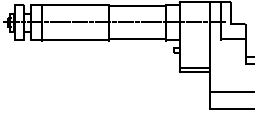
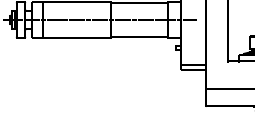
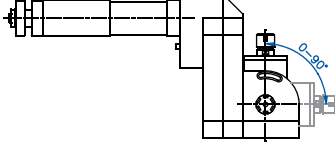
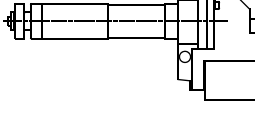

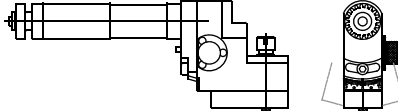


**GANG
TOOLING
Ø 32**

CITIZEN

M20/M32

CITIZEN ref.

CZ.000.M20/M32	GSC-510	AXIAL		ER-16 RATIO 1:1 5.000 RPM MAX.
CZ.001.M20/M32		AXIAL OFFSET		ER-16 RATIO 1:1 5.000 RPM MAX.
CZ.002.M20/M32	GSC-510-3x	AXIAL SPEEDER		ER-11 RATIO 1:3 15.000 RPM MAX.
CZ.008.M20/M32	GSE-306	RADIAL DOUBLE OUTPUT		ER-11 RATIO 1:1 5.000 RPM MAX.
CZ.008.M20/M32S	GSE-306-3x	RADIAL DOUBLE OUTPUT		ER-11 RATIO 1:3 15.000 RPM MAX.
CZ.011.M20/M32	GSE-507	RADIAL SET-BACK		ER-11 RATIO 1:1 5.000 RPM MAX.
CZ.013.M20/M32		RADIAL SPEEDER		ER-11 RATIO 1:3 15.000 RPM MAX.
CZ.021.M20/M32	GSA-107	RADIAL ADJUSTABLE SPEEDER		ER-11 RATIO 1:2.5 15.000 RPM MAX.
CZ.035.M20/M32		THREAD WHIRLING ± 25°		CUTTING HEAD RATIO 1:1 6.000 RPM MAX.
CZ.038.M20/M32	GSS-510	AXIAL SAW-MILL		Ø 13 RATIO 2:1 5.000 RPM MAX.
CZ.051.M20/M32		RADIAL "Y" AXIS		ER-11 RATIO 1:1 5.000 RPM MAX.



SPECIALS: NO PROBLEM





TURRET TOOLING

CITIZEN

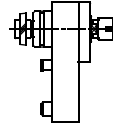
M12/M16T

CITIZEN ref.

CZ.000.M12/M16T

MSC-106

AXIAL

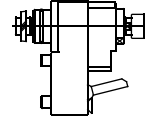


ER-11
RATIO 1:1
6.500 RPM MAX.

CZ.002.M12/M16T

MSC-106-2X

**AXIAL
SPEEDER**

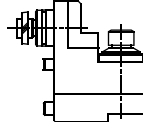


ER-11
RATIO 1:2
13.000 RPM MAX.

CZ.011.M12/M16T

MSE-106

**RADIAL
SET-BACK**

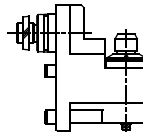


ER-11
RATIO 1:1
6.500 RPM MAX

CZ.013.M12/M16T

MSE-106-3x

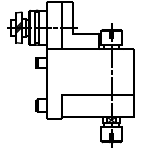
**RADIAL
SPEEDER**



ER-11
RATIO 1:3
15.000 RPM MAX.

CZ.029.M12/M16T

**RADIAL
4 SPINDLES**

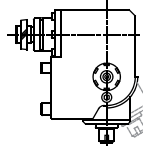


ER-11
RATIO 1:1
6.500 RPM MAX.

CZ.021.M12/M16T

MSA-103

**RADIAL
ADJUSTABLE**

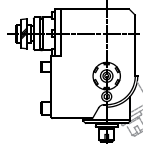


ER-11
RATIO 1:1
6.500 RPM MAX.

CZ.021.M12/M16TS

MSA-103-3x

**RADIAL
ADJUSTABLE
SPEEDER**

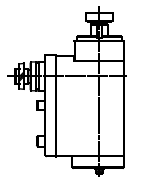


ER-11
RATIO 1:3
15.000 RPM MAX.

CZ.034.M12/M16T

MSP-160

**POLYGON
MAKER
REDUCER**

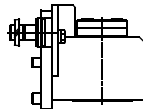


Ø 16
RATIO 3:1
4.000 RPM MAX.

CZ.035.M12/M16T

MSW-101

**THREAD
WHIRLING ± 15°**

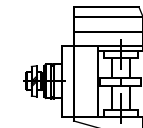


CUTTING HEAD
RATIO 2:1
6.000 RPM MAX.

CZ.036.M12/M16T

MSH-132

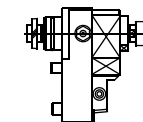
**GEAR
HOBBING**



Output: Cyl-Shaft
RATIO 3:1
2.000 RPM MAX.

CZ.050.M12/M16T

**AXIAL
"Y" AXIS**



ER-11
RATIO 1:1
6.500 RPM MAX.



SPECIALS: NO PROBLEM





TURRET TOOLING

CITIZEN

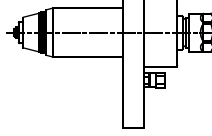
M20/M32T

CITIZEN ref.

CZ.000.M20/M32T

KSC-110-K

AXIAL

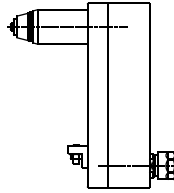


ER-16
RATIO 1:1
5.000 RPM MAX.



CZ.001.M20/M32T

**AXIAL
OFFSET**

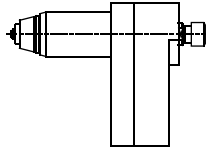


ER-16
RATIO 1:1
5.000 RPM MAX

CZ.002.M20/M32T

KSC-110-3X

**AXIAL
SPEEDER**

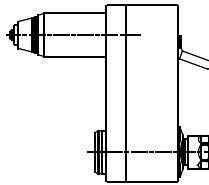


ER-11
RATIO 1:3
15.000 RPM MAX.



CZ.003.M20/M32T

**AXIAL
OFFSET
REDUCER**

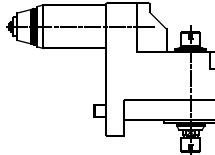


ER-20
RATIO 2:1
2.500 RPM MAX

CZ.008.M20/M32T

KSE-110

**RADIAL
DOUBLE
OUTPUT**

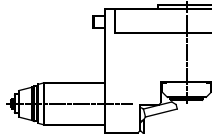


ER-11
RATIO 1:1
5.000 RPM MAX



CZ.011.M20/M32T

**RADIAL
SET-BACK**

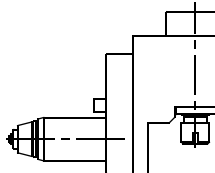


ER-20A
RATIO 1:1
5.000 RPM MAX

CZ.017.M20/M32T

KSE-110KA1

**RADIAL
SET-BACK
COOLANT
THROUGH**



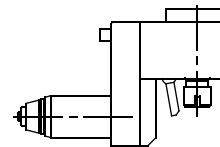
ER-16
RATIO 1:1
5.000 RPM MAX



CZ.013.M20/M32T

KSE-110-2X

**RADIAL
SET-BACK
SPEEDER**



ER-11
RATIO 1:2
10.000 RPM MAX

SPECIALS: NO PROBLEM



TURRET TOOLING

CITIZEN

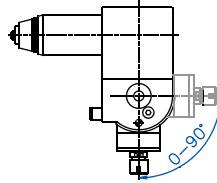
M20/M32T

CITIZEN ref.

CZ.021.M20/M32T

KSA-107-S

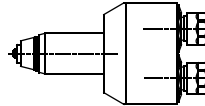
**RADIAL
ADJUSTABLE**



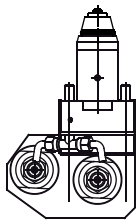
CZ.023.M20/M32T

KSC-510

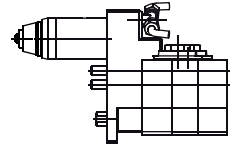
**AXIAL
DOUBLE
OUTPUT**



CZ.029.M20/M32T



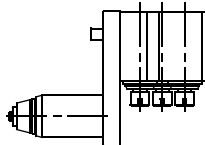
**RADIAL
2 SPINDLES**



CZ.029.M20/M32T

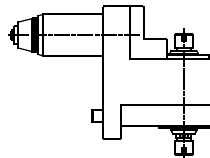
CDF-901

**RADIAL
3 SPINDLES**



CZ.015.M20/M32T

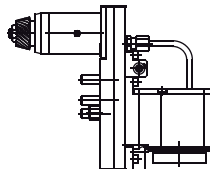
**RADIAL
4 SPINDLES**



CZ.035.M20/M32T

KSW-101

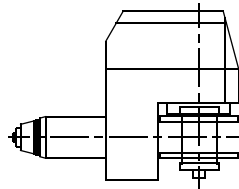
**THREAD
WHIRLING ± 15°**



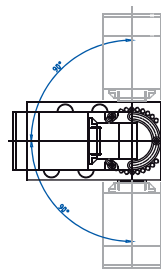
CZ.036.M20/M32T

KSS-660

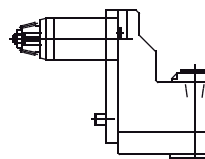
**GEAR
HOBBING**



CZ.051.M20/M32T



**RADIAL
"Y" AXIS
ADJUSTABLE**



ER-11
RATIO 1:1
5.000 RPM MAX.



ER-16
RATIO 1:1
5.000 RPM MAX.

ER-16
RATIO 1:1
5.000 RPM MAX.



ER-11
RATIO 1:1
5.000 RPM MAX.

ER-11
RATIO 1:1
5.000 RPM MAX.



CUTTING HEAD
RATIO 1:1
5.000 RPM MAX.

Output: Cyl-Shaft
RATIO 3:1
2.000 RPM MAX.



ER-16A
RATIO 1:1
5.000 RPM MAX.

SPECIALS: NO PROBLEM

