

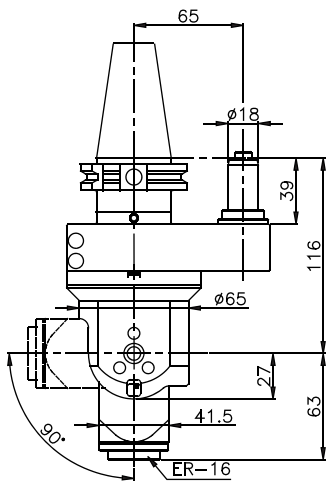


- ▶ Double indexing, maximum versatility
- ▶ Double indexation, souplesse maximale
- ▶ Doppelte Indexierung, höchste Anpassungsfähigkeit
- ▶ Doble indexación, máxima versatilidad

- ▶ Adaptable to all models of machines
- ▶ Adaptable sur toutes les machines
- ▶ Anpassbar an jede Art von Maschinen oder Bearbeitungszentren
- ▶ Adaptables a todo tipo de máquina

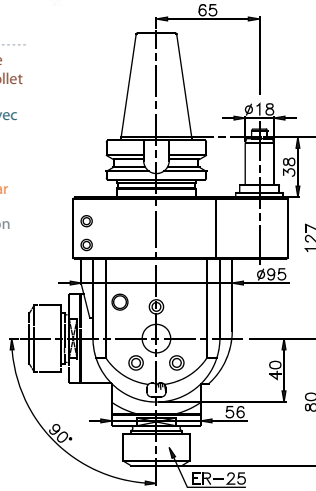
- ▶ 100% Checked and tested. Certification available
- ▶ 100% Rodés et vérifiés. Attestation disponible
- ▶ Unsere produkte sind zu 100% überprüft und getestet. Messprotokolle erhältlich
- ▶ Inspeccionados y rodados al 100%. Certificado disponible

- ▶ Fixed indexations every 15°
- ▶ Indexations fixes tous les 15°
- ▶ Feste Indexierung alle 15°
- ▶ Indexaciones fijas cada 15°



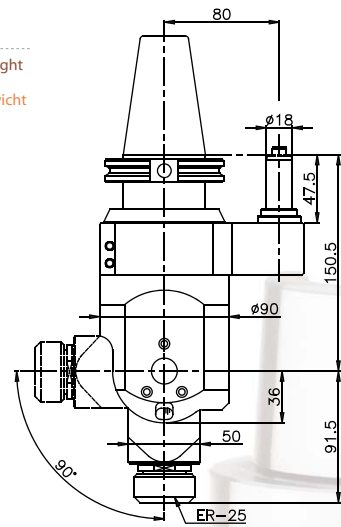
← CAR-0

- ▶ Also available with ER-20 collet
- ▶ Disponible également avec pince ER-20
- ▶ Auch mit Spannzange ER-20 lieferbar
- ▶ También disponible con pinza ER-20



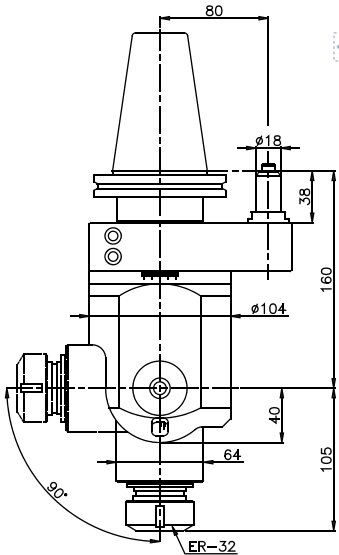
← CAR-1L

- ▶ Minimum weight
- ▶ Poids minime
- ▶ Geringes Gewicht
- ▶ Peso mínimo



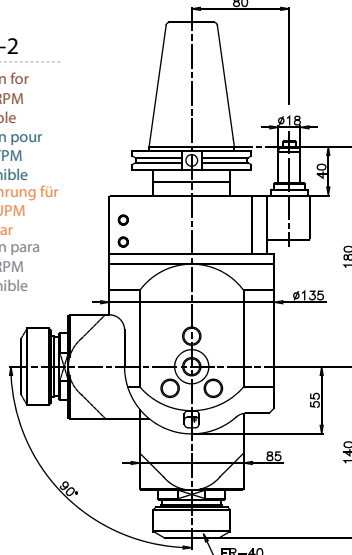
← CAR-1

- ▶ Version for 8000 RPM available
- ▶ Version pour 8000 TPM disponible
- ▶ Ausführung für 8000 UPM lieferbar
- ▶ Versión para 8000 RPM disponible



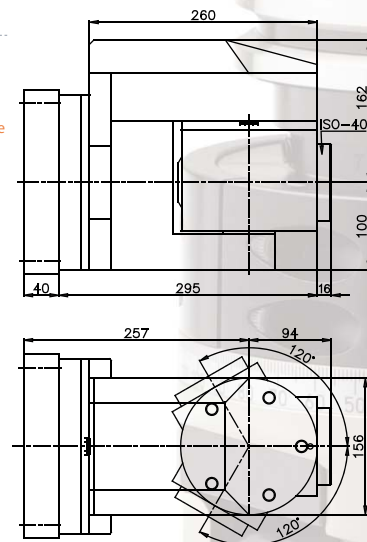
← CAR-2

- ▶ Version for 6000 RPM available
- ▶ Version pour 6000 TPM disponible
- ▶ Ausführung für 6000 UPM lieferbar
- ▶ Versión para 6000 RPM disponible



← CAR-3

- ▶ Versatile, large capacity
- ▶ Souple, grande capacité
- ▶ Vielseitig, große Kapazität
- ▶ Versátil, gran capacidad



← CAR-4

- ▶ Compact and robust
- ▶ Compact et robuste
- ▶ Kompakt und robust
- ▶ Compacto y robusto

FEATURES / CARACTÉRISTIQUES / MERKMALE / CARACTERÍSTICAS

| | CAR-0 | CAR-1L | CAR-1 | CAR-2 | CAR-3 | CAR-4 |
|-----------------------|-------|--------|--------|--------|--------|-------|
| R.P.M. max | 8.000 | 10.000 | 4.000 | 4.000 | 3.500 | 3.000 |
| KW | 3.5 | 4 | 3.5 | 6 | 10 | 12 |
| Ø MAX | 10 | 16 | 16 | 20 | 26 | 34 |
| KG | 4 | 4.5 | 7 | 13 | 25 | 80 |
| ↔ | 1:1 | 1:1 | 1:1 | 1:1 | 1:1 | 1:1 |
| Nm.max | 10 | 20 | 12 | 22 | 40 | 100 |
| ISO/DIN/MAS BT | 30/40 | 40/50 | 40/50 | 50 | 50 | * |
| HSK | 50/63 | 63/100 | 63/100 | 80/100 | 80/100 | * |

(*) FLANGE MOUNTED GIVING INCREASED RIGIDITY / RIGIDITÉ SUPÉRIEURE LORDS DU MONTAGE PAR FLASQUE SUR LA MACHINE / ERHÖHTE STARRHEIT DURCH FLANSCHANBAU DIREKT AN DIE MASCHINE / EL MONTAJE CON PLATINA AUMENTA LA RIGIDEZ

(*) According to the machine / Suivant la machine / Nach der Maschine / Según máquina