



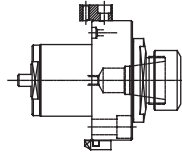
OKUMA

Models

LB 2000 - 2500 - 3000 EX M / MY
LB 3000 EX MW / MYW

OK.000.LB2000

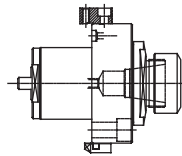
AXIAL



ER-32
RATIO 1:1
6.000 RPM MAX.

OK.005.LB2000

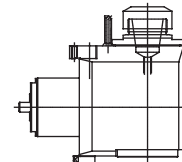
**AXIAL WITH
HIGH PRESSURE
COOLANT THROUGH**



ER-32
RATIO 1:1
6.000 RPM MAX.
50 bar MAX.

OK.010.LB2000

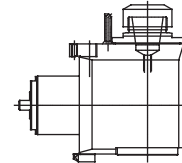
RADIAL



ER-32
RATIO 1:1
6.000 RPM MAX.

OK.016.LB2000

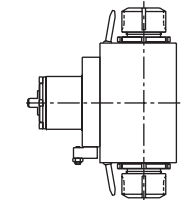
**RADIAL WITH
HIGH PRESSURE
COOLANT THROUGH**



ER-32
RATIO 1:1
6.000 RPM MAX.
80 bar MAX.

OK.008.LB2000

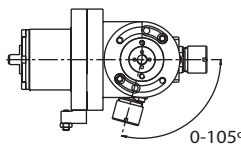
RADIAL DOUBLE OUTPUT



ER-32
RATIO 1:1
6.000 RPM MAX.

OK.021.LB3000

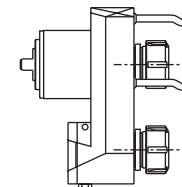
RADIAL ADJUSTABLE



ER-25
RATIO 1:1
6.000 RPM MAX.

OK.004.LB2000

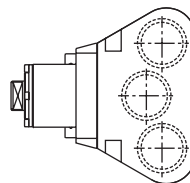
AXIAL DOUBLE OUTPUT



ER-25
RATIO 1:1
6.000 RPM MAX.

OK.023.LB3000

RADIAL MULTIPLE



ER-25
RATIO 1:1
6.000 RPM MAX.



SPECIALS: NO PROBLEM



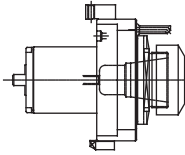


OKUMA

Models **LB 4000 EX M / MY**

OK.000.LB4000

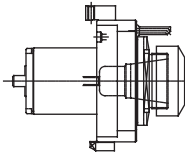
AXIAL



ER-40
RATIO 1:1
6.000 RPM MAX.

OK.005.LB4000

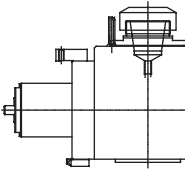
**AXIAL WITH
HIGH PRESSURE
COOLANT THROUGH**



ER-40
RATIO 1:1
6.000 RPM MAX.
50 bar MAX.

OK.010.LB4000

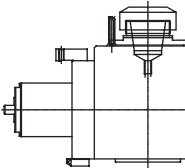
RADIAL



ER-40
RATIO 1:1
6.000 RPM MAX.

OK.016.LB4000

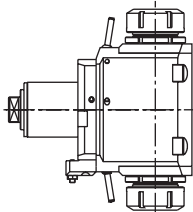
**RADIAL WITH
HIGH PRESSURE
COOLANT THROUGH**



ER-40
RATIO 1:1
6.000 RPM MAX.
80 bar MAX.

OK.008.LB4000

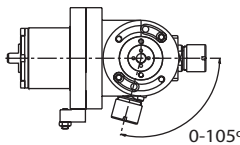
**RADIAL DOUBLE
OUTPUT**



ER-40
RATIO 1:1
6.000 RPM MAX.

OK.021.LB4000

RADIAL ADJUSTABLE



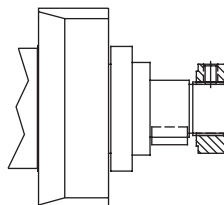
ER-25
RATIO 1:1
6.000 RPM MAX..



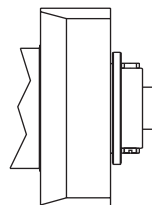
**SPECIAL SPINDLE
EXECUTIONS:**

Also available for:

**LB 2000 - 2500 - 3000 EX M / MY
LB 3000 EX MW / MYW**



ARBOR MILL



HSK C-40

SPECIALS: NO PROBLEM