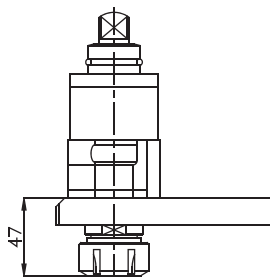


# MORI SEIKI

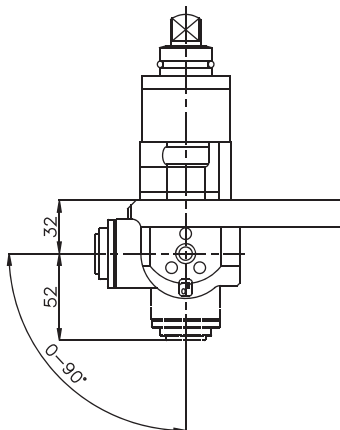
SL / ZL -150(MC)  
SL 153-154(MC)



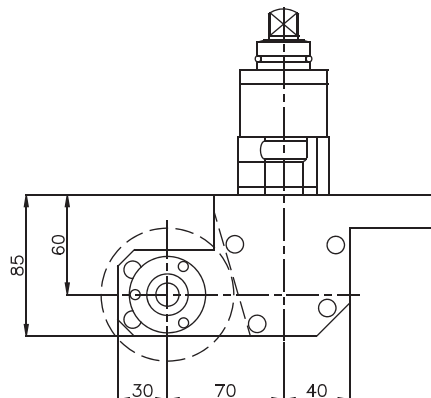
- P.001 AXIAL OFFSET
- P.006 AXIAL OFFSET INTERNAL COOLANT



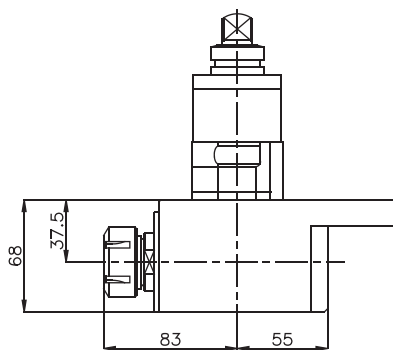
- P.021 RADIAL ADJUSTABLE



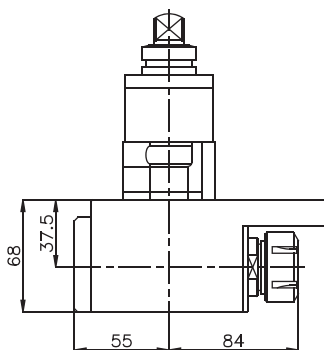
- P.030 SAW-MILL



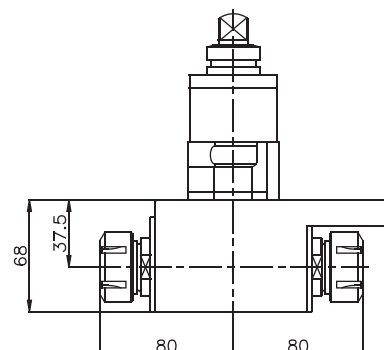
- P.010 RADIAL
- P.016 RADIAL INTERNAL COOLANT



- P.033 RADIAL SUBSPINDLE



- P.008 RADIAL DOUBLE OUTPUT



Order Code	MODEL	Tool Style	Spindle	MAX RPM	GearRatio	Nm
MS.001.SL50	SL / ZL - 150-153-154	AXIAL OFFSET	ER-25	6000	1:1 >	32
MS.021.SL50	SL / ZL - 150-153-154	ADJ ANGLE	ER-16	6000	1:1 <	7
MS.030.SL50	SL / ZL - 150-153-154	SAW-MILL	Upon request	3000	1:1 <	32
MS.010.SL50	SL / ZL - 150-153-154	RADIAL	ER-25	6000	1:1 <	32
MS.011.SL50	SL / ZL - 150-153-154	RADIAL SUBSPINDLE	ER-25	6000	1:1 <	32
MS.008.SL50	SL / ZL - 150-153-154	FACE/SUB-SPINDLE	ER-20/ER-20	6000	1:1 ><	32

OTHER MODELS PLEASE ASK © MADAULA SA. SUBJECT TO CHANGE WITHOUT NOTICE

**OPTION CODE**

- > CW INPUT = CW OUTPUT
- < CW INPUT = CCW OUTPUT

**ALSO AVAILABLE:**  
SPEED INCREASING  
SPEED REDUCTION  
RADIAL TOOL REVERSES FOR SUB-SPINDLE



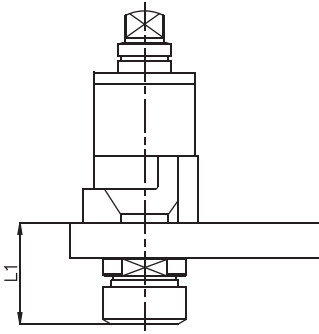


# MORI SEIKI

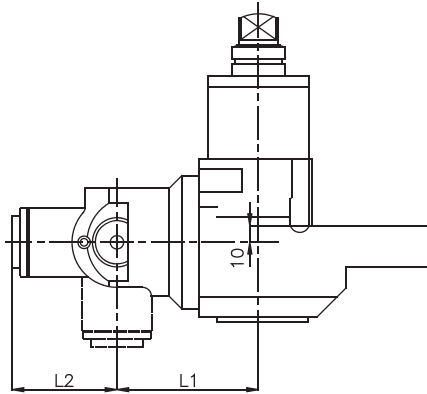
SL / ZL -200-250(MC)  
SL-203 / 204 / 205  
SL-2500 Y SL-300



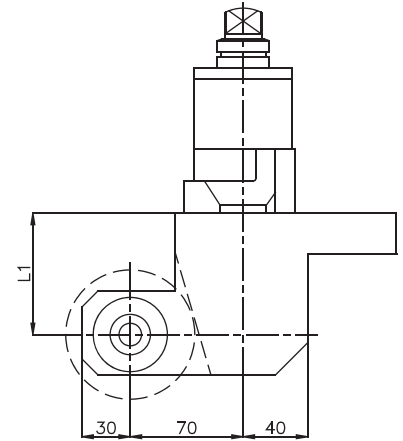
P.001 AXIAL OFFSET  
P.006 AXIAL OFFSET INTERNAL COOLANT



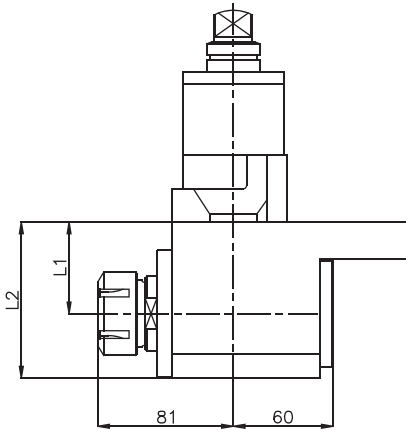
P.021 RADIAL ADJUSTABLE



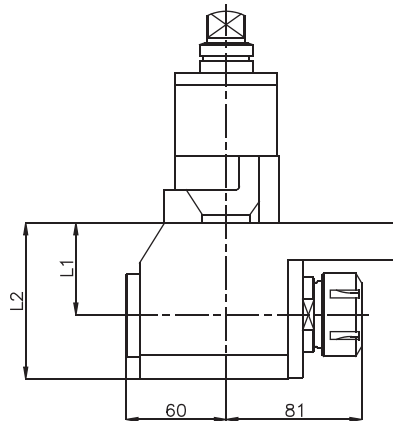
P.030 SAW-MILL



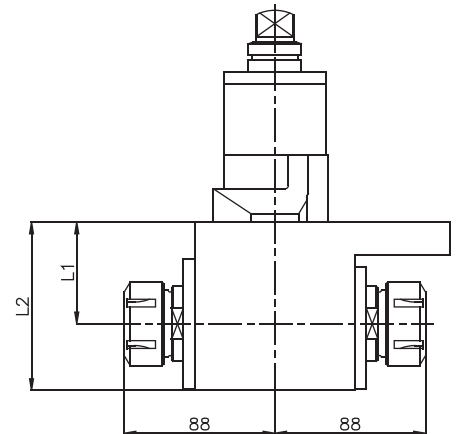
P.010 RADIAL  
P.016 RADIAL INTERNAL COOLANT



P.033 RADIAL SUBSPINDLE



P.008 RADIAL DOUBLE OUTPUT



Order Code	MODEL	Tool Style	Spindle	MAX RPM	GearRatio	Nm	L1	L2
MS.001.SL200	SL / ZL-200 / 250, SL-2500Y	AXIAL OFFSET	ER-32	4000	1:1 >	55	61	
MS.021.SL200	SL / ZL-200 / 250, SL-2500Y	ADJ ANGLE	ER-16	4000	1:1 <	7	85	63
MS.030.SL200	SL / ZL-200 / 250, SL-2500Y	SAW-MILL	Upon request	3000	1:1 <	55	75	
MS.010.SL200	SL / ZL-200 / 250, SL-2500Y	RADIAL	ER-32	4000	1:1 <	55	55	94
MS.033.SL200	SL / ZL-200 / 250, SL-2500Y	RADIAL SUBSPINDLE	ER-32	4000	1:1 <	55	55	94
MS.008.SL200	SL / ZL-200 / 250, SL-2500Y	FACE/SUB-SPINDLE	ER-25/ER-25	4000	1:1 ><	55	55	90
MS.001.SL300	SL-300	AXIAL OFFSET	ER-32	4000	1:1 >	55	59	
MS.021.SL300	SL-300	ADJ ANGLE	ER-25	4000	1:1 <	14	94	86
MS.030.SL300	SL-300	SAW-MILL	Upon request	3000	1:1 <	55	70	
MS.010.SL300	SL-300	RADIAL	ER-32	4000	1:1 <	55	40	72,5
MS.033.SL300	SL-300	RADIAL SUBSPINDLE	ER-32	4000	1:1 <	55	40	72,5
MS.008.SL300	SL-300	FACE/SUB-SPINDLE	ER-25/ER-25	4000	1:1 ><	55	40	72,5

OTHER MODELS PLEASE ASK

© MADAULA SA. SUBJECT TO CHANGE WITHOUT NOTICE



**OPTION CODE**

- > CW INPUT = CW OUTPUT
- < CW INPUT = CCW OUTPUT

**ALSO AVAILABLE:**

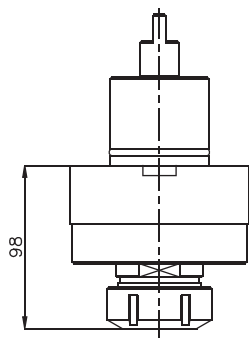
- SPEED INCREASING
- SPEED REDUCTION
- RADIAL TOOL REVERSES FOR SUB-SPINDLE

# MORI SEIKI

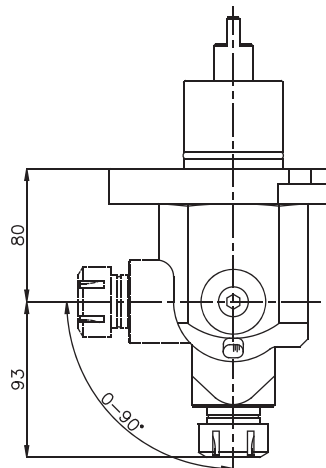
NL 1500-2000-2500-3000



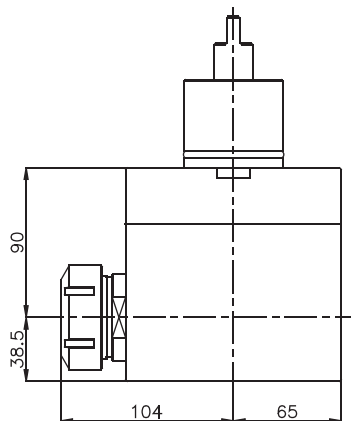
P.000 AXIAL  
P.005 AXIAL INTERNAL COOLANT



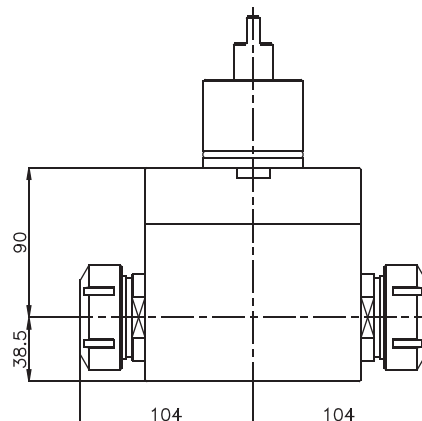
P.021 RADIAL ADJUSTABLE



P.010 RADIAL  
P.016 RADIAL INTERNAL COOLANT



P.008 RADIAL DOUBLE OUTPUT



Order Code	MODEL	Tool Style	Spindle	MAX RPM	GearRatio	Nm
MS.000.NL2000	NL 1500-2000	AXIAL	ER-32	6000	1:1 >	55
MS.021.NL2000	NL 1500-2000	ADJ ANGLE	ER-25	6000	1:1 <	14
MS.010.NL2000	NL 1500-2000	RADIAL	ER-32	6000	1:1 <	55
MS.008.NL2000	NL 1500-2000	FACE/SUB-SPINDLE	ER-25/ER-25	6000	1:1 ><	32
MS.000.NL3000	NL 2500-3000	AXIAL	ER-40	6000	1:1 >	86
MS.021.NL3000	NL 2500-3000	ADJ ANGLE	ER-25	6000	1:1 <	14
MS.010.NL3000	NL 2500-3000	RADIAL	ER-40	6000	1:1 <	86
MS.008.NL3000	NL 2500-3000	FACE/SUB-SPINDLE	ER-32/ER-32	6000	1:1 ><	55

OTHER MODELS PLEASE ASK © MADAULA SA. SUBJECT TO CHANGE WITHOUT NOTICE

**OPTION CODE**

- CW INPUT = CW OUTPUT
- CW INPUT = CCW OUTPUT

FOR MORE INFORMATION ASK FOR SPECIFIC LITERATURE

ALSO AVAILABLE:  
SPEED INCREASING  
SPEED REDUCTION  
RADIAL TOOL REVERSES FOR SUB-SPINDLE

