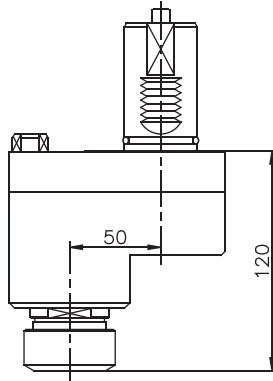


MAZAK

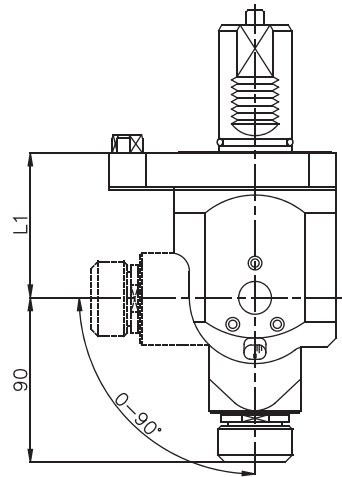
MULTIPLEX 610/6100
MULTIPLEX 620/6200



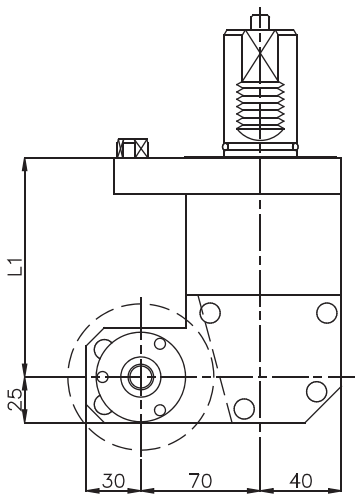
P.001 AXIAL OFFSET
P.006 AXIAL OFFSET INTERNAL COOLANT



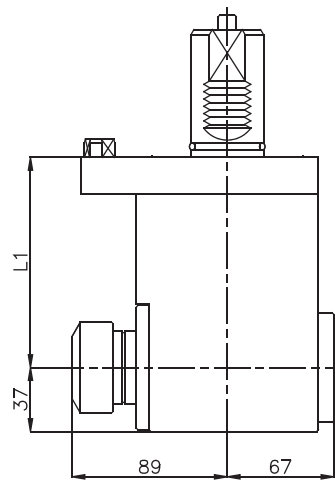
P.021 RADIAL ADJUSTABLE



P.030 SAW-MILL



P.010 RADIAL
P.016 RADIAL INTERNAL COOLANT



| Order Code | MODEL | Tool Style | Spindle | MAX RPM | GearRatio | Nm | L1 |
|-------------|----------------------|--------------|--------------|---------|-----------|----|-----|
| MK.001.6100 | MULTIPLEX 610 / 6100 | AXIAL OFFSET | ER-32 | 5000 | 1:1 > | 55 | |
| MK.021.6100 | MULTIPLEX 610 / 6100 | ADJ ANGLE | ER-25 | 5000 | 1:1 < | 14 | 79 |
| MK.030.6100 | MULTIPLEX 610 / 6100 | SAW-MILL | Upon request | 3500 | 1:1 < | 55 | 115 |
| MK.010.6100 | MULTIPLEX 610 / 6100 | RADIAL | ER-32 | 5000 | 1:1 < | 55 | 115 |
| MK.001.6200 | MULTIPLEX 620 / 6200 | AXIAL OFFSET | ER-32 | 5000 | 1:1 > | 55 | |
| MK.021.6200 | MULTIPLEX 620 / 6200 | ADJ ANGLE | ER-25 | 5000 | 1:1 < | 14 | 79 |
| MK.030.6200 | MULTIPLEX 620 / 6200 | SAW-MILL | Upon request | 3500 | 1:1 < | 55 | 130 |
| MK.010.6200 | MULTIPLEX 620 / 6200 | RADIAL | ER-32 | 5000 | 1:1 < | 55 | 130 |

OTHER MODELS PLEASE ASK © MADAULA SA. SUBJECT TO CHANGE WITHOUT NOTICE

- OPTION CODE**
- > CW INPUT = CW OUTPUT
 - < CW INPUT = CCW OUTPUT
- ALSO AVAILABLE:**
- SPEED INCREASING
 - SPEED REDUCTION
 - RADIAL TOOL REVERSES FOR SUB-SPINDLE

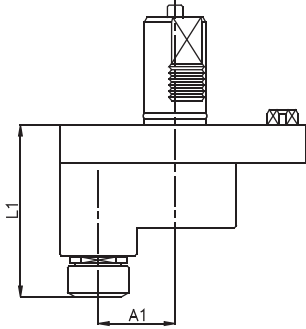


MAZAK

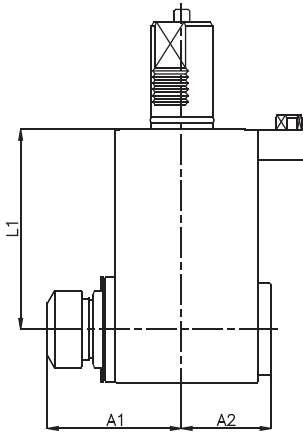


SQT-100M(S) / 10M(S)
SQT-200M(S) / 250M(S) / 15M(S) / 18M(S)
NEXUS 100M / 150M / 200M / 250M

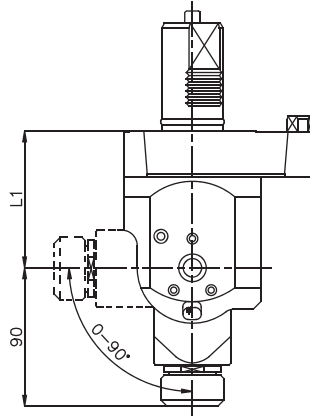
P.001 AXIAL OFFSET
P.006 AXIAL OFFSET INTERNAL COOLANT



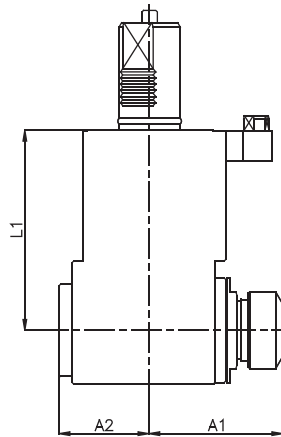
P.010 RADIAL
P.016 RADIAL INTERNAL COOLANT



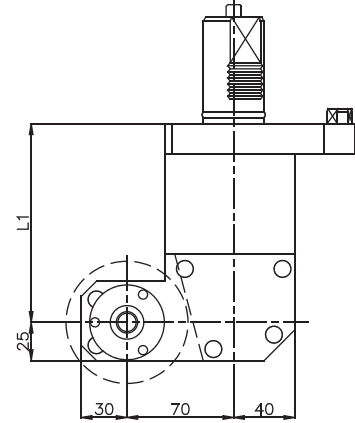
P.021 RADIAL ADJUSTABLE



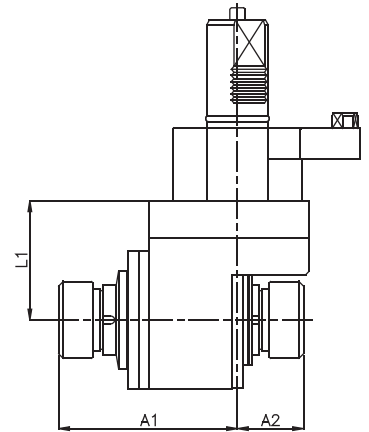
P.033 RADIAL SUBSPINDLE



P.030 SAW-MILL



P.008 RADIAL DOUBLE OUTPUT



| Order Code | MODEL | Tool Style | Spindle | MAX RPM | GearRatio | Nm | L1 | A1 | A2 |
|--------------|-------------------|-------------------|--------------|---------|-----------|----|-----|-----|----|
| MK.001.SQ100 | SQT-100M / 10M(S) | AXIAL OFFSET | ER-32 | 5000 | 1:1 > | 55 | 98 | 50 | |
| MK.021.SQ100 | SQT-100M / 10M(S) | ADJ ANGLE | ER-25 | 5000 | 1:1 < | 14 | 79 | | |
| MK.030.SQ100 | SQT-100M / 10M(S) | SAW-MILL | Upon request | 3500 | 1:1 < | 55 | 100 | | |
| MK.010.SQ100 | SQT-100M / 10M(S) | RADIAL | ER-32 | 5000 | 1:1 < | 55 | 100 | 85 | 59 |
| MK.033.SQ100 | SQT-100M / 10M(S) | RADIAL SUBSPINDLE | ER-32 | 5000 | 1:1 < | 55 | 100 | 77 | 59 |
| MK.008.SQ100 | SQT-100M / 10M(S) | FACE/SUB-SPINDLE | ER-25/ER-25 | 5000 | 1:1 >< | 32 | 100 | 97 | 36 |
| MK.001.SQ200 | SQT-200M(S) | AXIAL OFFSET | ER-32 | 5000 | 1:1 > | 55 | 110 | 50 | |
| MK.021.SQ200 | SQT-200M(S) | ADJ ANGLE | ER-25 | 5000 | 1:1 < | 14 | 79 | | |
| MK.030.SQ200 | SQT-200M(S) | SAW-MILL | Upon request | 3500 | 1:1 < | 55 | 130 | | |
| MK.010.SQ200 | SQT-200M(S) | RADIAL | ER-32 | 5000 | 1:1 < | 55 | 130 | 89 | 68 |
| MK.033.SQ200 | SQT-200M(S) | RADIAL SUBSPINDLE | ER-32 | 5000 | 1:1 < | 55 | 130 | 89 | 68 |
| MK.008.SQ200 | SQT-200M(S) | FACE/SUB-SPINDLE | ER-32/ER-32 | 5000 | 1:1 >< | 55 | 130 | 117 | 43 |

OTHER MODELS PLEASE ASK

© MADAULA SA. SUBJECT TO CHANGE WITHOUT NOTICE



OPTION CODE

- > CW INPUT = CW OUTPUT
- < CW INPUT = CCW OUTPUT

ALSO AVAILABLE:

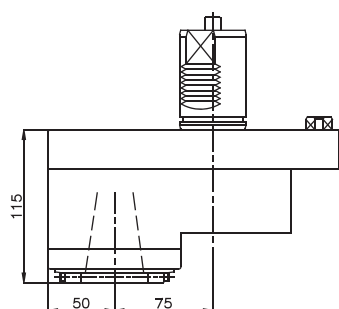
- SPEED INCREASING
- SPEED REDUCTION
- RADIAL TOOL REVERSES FOR SUB-SPINDLE

MAZAK

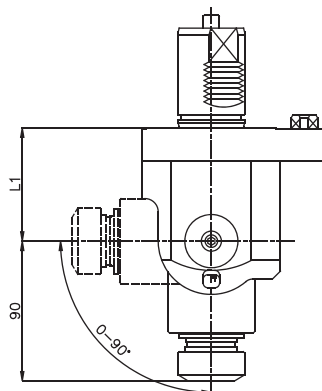
SQT-28M / 30M / 300M(S)
NEXUS 300M / 350M / 400M / 450M



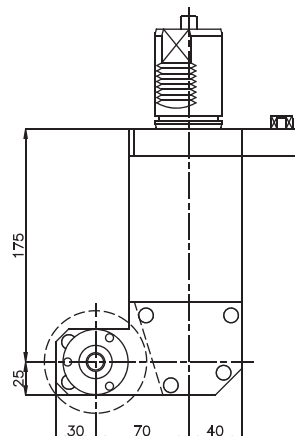
P.001 AXIAL OFFSET
P.006 AXIAL OFFSET INTERNAL COOLANT



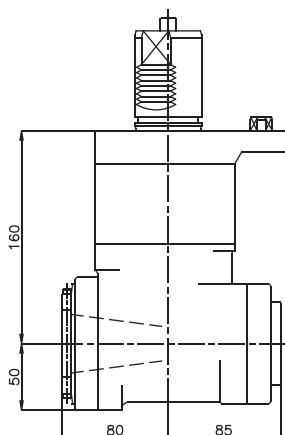
P.021 RADIAL ADJUSTABLE



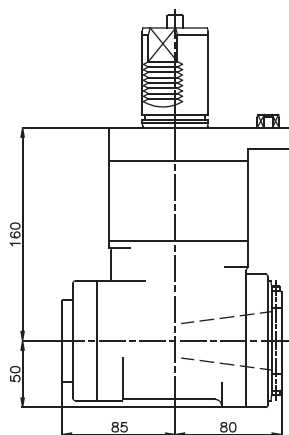
P.030 SAW-MILL



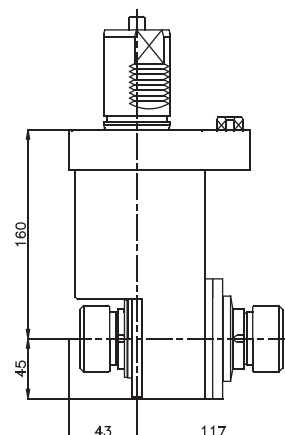
P.010 RADIAL
P.016 RADIAL INTERNAL COOLANT



P.033 RADIAL SUBSPINDLE



P.008 RADIAL DOUBLE OUTPUT



| Order Code | MODEL | Tool Style | Spindle | MAX RPM | GearRatio | Nm | L1 |
|-------------|-------------------------|-------------------|--------------|---------|-----------|----|----|
| MK.001.SQ28 | SQT-28M / 30M / 300M(S) | AXIAL OFFSET | ISO-40 | 3000 | 1:1 > | 86 | |
| MK.021.SQ28 | SQT-28M / 30M / 300M(s) | ADJ ANGLE | ER-32 | 3000 | 1:1 < | 35 | 79 |
| MK.030SQ28 | SQT-28M / 30M / 300M(S) | SAW-MILL | Upon request | 3000 | 1:1 < | 86 | |
| MK.010.SQ28 | SQT-28M / 30M / 300M(S) | RADIAL | ISO-40 | 3000 | 1:1 < | 86 | |
| MK.011.SQ28 | SQT-28M / 30M / 300M(S) | RADIAL SUBSPINDLE | ISO-40 | 3000 | 1:1 < | 86 | |
| MK.008.SQ28 | SQT-28M / 30M / 300M(S) | FACE/SUB-SPINDLE | ER-32 | 3000 | 1:1 < | 86 | |

OTHER MODELS PLEASE ASK © MADAULA SA. SUBJECT TO CHANGE WITHOUT NOTICE

OPTION CODE

- > CW INPUT = CW OUTPUT
- < CW INPUT = CCW OUTPUT

ALSO AVAILABLE:

- SPEED INCREASING
- SPEED REDUCTION
- RADIAL TOOL REVERSES FOR SUB-SPINDLE

FOR MORE INFORMATION ASK FOR SPECIFIC LITERATURE

