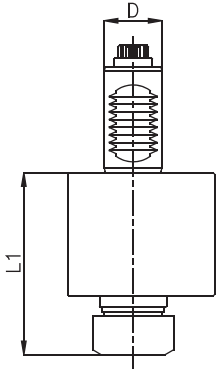


EMCO

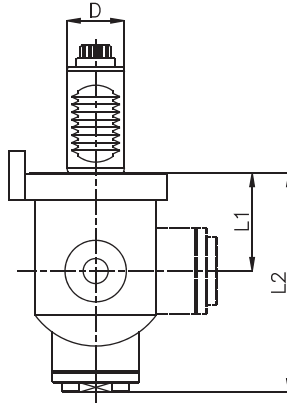
ET 332 MC, ET 365 MC, ET 425 TCM
ET 465 MC PLUS/HYPERTURN 665
E42, E45, E65



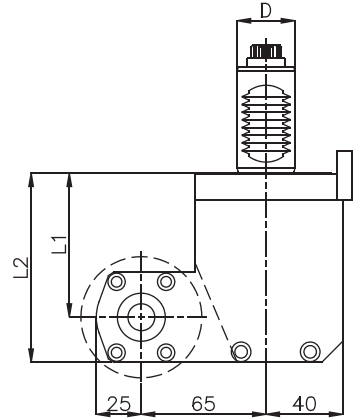
P.000 AXIAL
P.005 AXIAL INTERNAL COOLANT



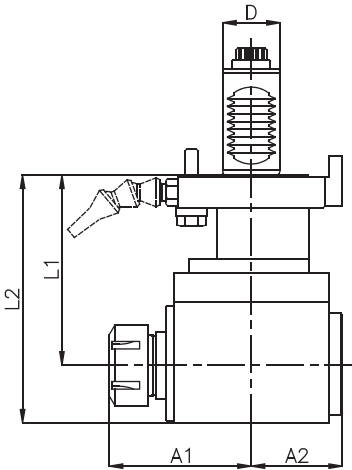
P.021 RADIAL ADJUSTABLE



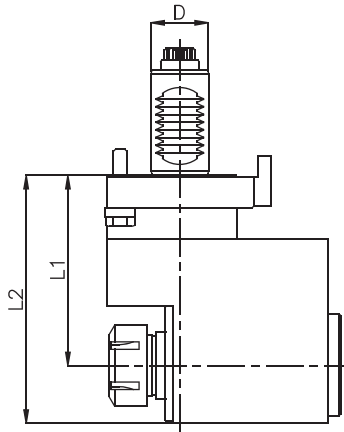
P.030 SAW-MILL



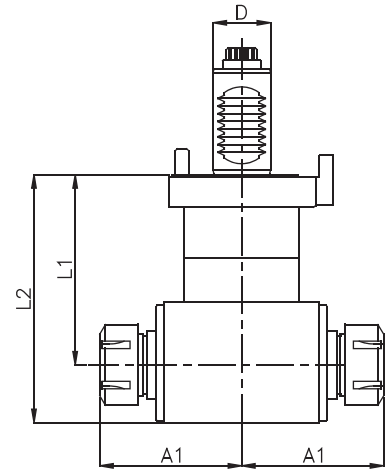
P.010 RADIAL
P.016 RADIAL INTERNAL COOLANT



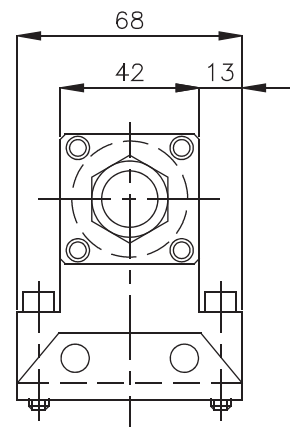
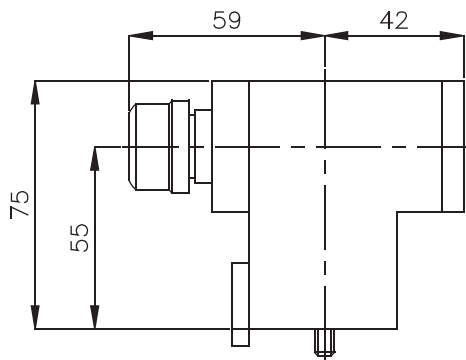
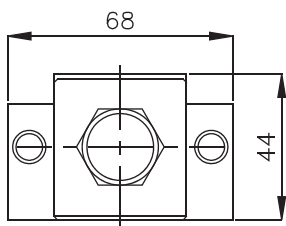
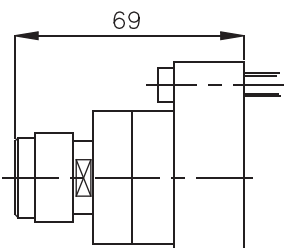
P.011 RADIAL SET-BACK
P.017 RADIAL SET-BACK INTERNAL COOLANT



P.008 RADIAL DOUBLE OUTPUT



ET 425 TCM



EMCO

ET 332 MC, ET 365 MC, ET 425 TCM
 ET 465 MC PLUS/HYPERTURN 665
 E42, E45, E65



ET 332 TCM USE VDI -25, SAUTER DRIVE DIN 5480 (see drawings page 16)

Order Code	MODEL	Tool Style	Spindle	MAX RPM	GearRatio	Nm	D	L1	L2	A1	A2
EM.000.332	ET-332MC	AXIAL	ER-25	6000	1:1 >	32	Ø 25	70			
EM.021.332	ET-332MC	ADJ ANGLE	ER-16	6000	1:1 <	7	Ø 25	51	114		
EM.030.332	ET-332MC	SAW-MILL	Upon request	3000	1:1 <	32	Ø 25	75	100		
EM.010.332	ET-332MC	RADIAL	ER-25	6000	1:1 <	32	Ø 25	75	105	72	47
EM.011.332	ET-332MC	RADIAL SET-BACK	ER-25	6000	1:1 >	32	Ø 25	75	105	37	84
EM.008.332	ET-332MC	FACE/SUB-SPINDLE	ER-20/ER-20	6000	1:1 > <	32	Ø 25	75	105	74	

ET 345 TCM USE VDI -30, DUPLOMATIC DRIVE DIN 1809 (see drawings page 4)

Order Code	MODEL	Tool Style	Spindle	MAX RPM	GearRatio	Nm	D	L1	L2	A1	A2
EM.000.345	ET-345TMC	AXIAL	ER-25	6000	1:1 >	32	Ø 30	94			
EM.021.345	ET-345TMC	ADJ ANGLE	ER-16	6000	1:1 <	7	Ø 30	51	114		
EM.030.345	ET-345TMC	SAW-MILL	Upon request	3000	1:1 <	32	Ø 30	100	125		
EM.010.345	ET-345TMC	RADIAL	ER-25	6000	1:1 <	32	Ø 30	78	110	72	47
EM.011.345	ET-345TMC	RADIAL SET-BACK	ER-25	6000	1:1 >	32	Ø 30	78	110	40	74
EM.008.345	ET-345TMC	FACE/SUB-SPINDLE	ER-20/ER-20	6000	1:1 > <	32	Ø 30	100	110	74	

ET 365 TCM USE VDI -30, SAUTER DRIVE DIN 5480 (see drawings page 16)

Order Code	MODEL	Tool Style	Spindle	MAX RPM	GearRatio	Nm	D	L1	L2	A1	A2
EM.000.365	ET-365MC	AXIAL	ER-25	6000	1:1 >	32	Ø 30	94			
EM.021.365	ET-365MC	ADJ ANGLE	ER-16	6000	1:1 <	7	Ø 30	51	114		
EM.030.365	ET-365MC	SAW-MILL	Upon request	3000	1:1 <	32	Ø 30	100	125		
EM.010.365	ET-365MC	RADIAL	ER-25	6000	1:1 <	32	Ø 30	100	130	72	47
EM.011.365	ET-365MC	RADIAL SET-BACK	ER-25	6000	1:1 >	32	Ø 30	100	130	37	84
EM.008.365	ET-365MC	FACE/SUB-SPINDLE	ER-20/ER-20	6000	1:1 > <	32	Ø 30	100	130	74	

ET 465 TCM and HYPERTURN 665 USE VDI -30, SAUTER DRIVE DIN 5480 (see drawings page 16)

Order Code	MODEL	Tool Style	Spindle	MAX RPM	GearRatio	Nm	D	L1	L2	A1	A2
EM.000.465	ET-465MC	AXIAL	ER-25	6000	1:1 >	32	Ø 30	94			
EM.021.465	ET-465MC	ADJ ANGLE	ER-16	6000	1:1 <	7	Ø 30	51	114		
EM.030.465	ET-465MC	SAW-MILL	Upon request	3000	1:1 <	32	Ø 30	100	125		
EM.010.465	ET-465MC	RADIAL	ER-25	6000	1:1 <	32	Ø 30	100	130	72	47
EM.011.465	ET-465MC	RADIAL SET-BACK	ER-25	6000	1:1 >	32	Ø 30	100	130	37	84
EM.008.465	ET-465MC	FACE/SUB-SPINDLE	ER-20/ER-20	6000	1:1 > <	32	Ø 30	100	130	74	

OTHER MODELS PLEASE ASK

© MADAULA SA. SUBJECT TO CHANGE WITHOUT NOTICE

OPTION CODE

- > CW INPUT = CW OUTPUT
- < CW INPUT = CCW OUTPUT

ALSO AVAILABLE:

- SPEED INCREASING
- SPEED REDUCTION
- RADIAL TOOL REVERSES FOR SUB-SPINDLE

FOR MORE INFORMATION ASK FOR SPECIFIC LITERATURE

