



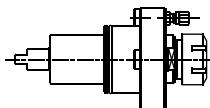
DOOSAN INFRACORE

BMT-55

Models **PUMA 230/230M/230MSB**
PUMA 240/240MA
PUMA 2500LY

DN.000.230

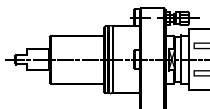
AXIAL



ER-25
RATIO 1:1
6.000 RPM MAX.

DN.000.230/2

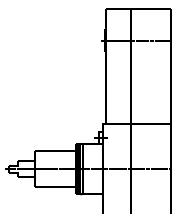
AXIAL



ER-32
RATIO 1:1
6.000 RPM MAX.

DN.001.230

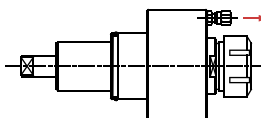
AXIAL OFFSET



ER-25
RATIO 1:1
6.000 RPM MAX.

DN.005.230

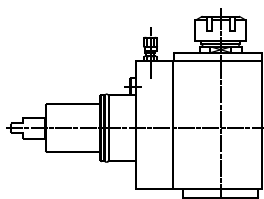
**AXIAL WITH
HIGH PRESSURE
COOLANT THROUGH**



ER-32
RATIO 1:1
6.000 RPM MAX.

DN.010.230

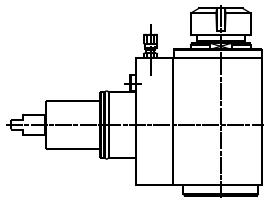
RADIAL



ER-25
RATIO 1:1
6.000 RPM MAX.

DN.010.230/2

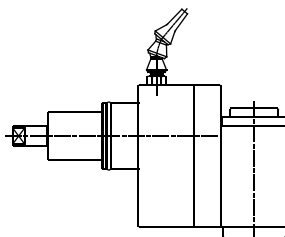
RADIAL



ER-32
RATIO 1:1
4.000 RPM MAX.

DN.011.230

**RADIAL
SET-BACK**



ER-25A
RATIO 1:1
4.000 RPM MAX.



SPECIALS: NO PROBLEM



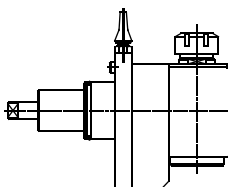
DOOSAN INFRACORE

BMT-55

Models **PUMA 230/230M/230MSB**
PUMA 240/240MA
PUMA 2500LY

DN.013.230

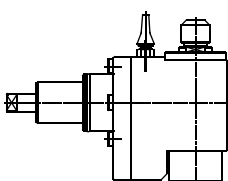
**RADIAL
SPEEDER**



ER-25
RATIO 1:3
13.000 RPM MAX.

DN.018.230

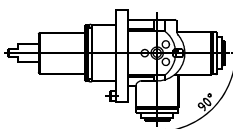
**RADIAL
SPEEDER WITH
HIGH PRESSURE
COOLANT THROUGH**



ER-16
RATIO 1:3
9.000 RPM MAX.

DN.021.230

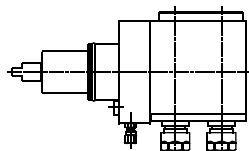
**RADIAL
ADJUSTABLE**



ER-16A
RATIO 1:1
6.000 RPM MAX.

DN.029.230

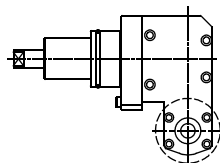
**RADIAL DOUBLE
OUTPUT**



ER-16
RATIO 1:1
4.000 RPM MAX.

DN.030.230

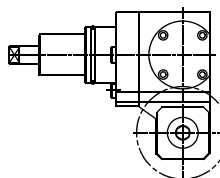
SAW-MILL



Ø22
RATIO 1:1
2.500 RPM MAX.

DN.030.230/2

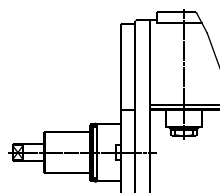
**SAW-MILL
REDUCER**



Ø22
RATIO 2.5:1
2.000 RPM MAX.

DN.054.230

**"Y" AXIS
MILLING**



ER-20A
RATIO 1:1
3.000 RPM MAX.



SPECIALS: NO PROBLEM

TOOLING FOR **BARUFFALDI - BIGLIA - CMZ - DUPLOMATIC - EMCO - HAAS - INDEX - MAZAK - MIYANO - MORI SEIKI - NAKAMURA - OKUMA - SAUTER - SCHAUBLIN - SPINNER - ETC.** PLEASE ASK FOR LITERATURE

Rec del Molí 11-17 08105 SANT FOST DE CAMPSENTELLES - BARCELONA (SPAIN) TEL.: 34.93.593.36.00 - FAX.: 34.93.570.07.99 - Email: comercial@madaula.com





DOOSAN INFRACORE

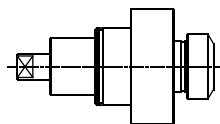
BMT-75

Models

PUMA 400LM/400LMB

DN.000.400

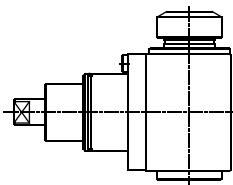
AXIAL



ER-40
RATIO 1:1
3.500 RPM MAX.

DN.010.400

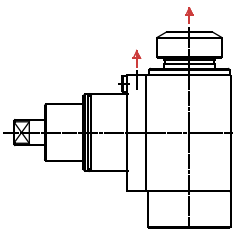
RADIAL



ER-40
RATIO 1:1
3.500 RPM MAX.

DN.016.400

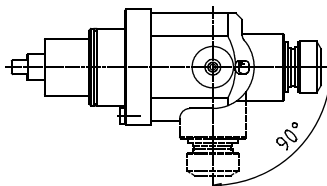
**RADIAL WITH
HIGH PRESSURE
COOLANT THROUGH**



ER-40
RATIO 1:1
3.500 RPM MAX.

DN.021.400

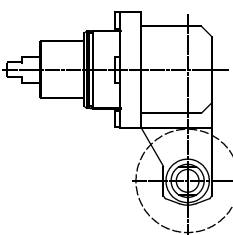
**RADIAL
ADJUSTABLE**



ER-32
RATIO 1:1
3.000 RPM MAX.

DN.030.400

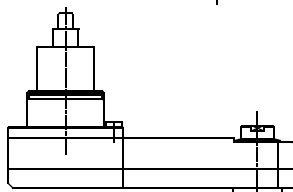
SAW-MILL



Ø22
RATIO 1:1
3.000 RPM MAX.

DN.040.400

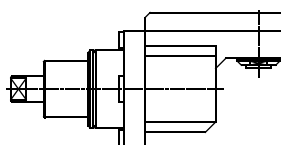
**WORK
INSIDE TUBES**



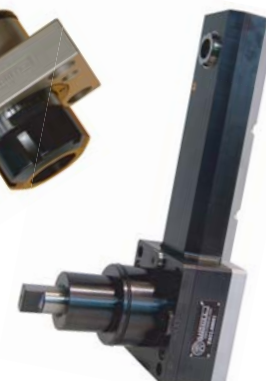
ER-16A
RATIO 1:1
3.000 RPM MAX.

DN.040.400/2

**WOODRUFF
KEY CUTTER**



ER-16A
RATIO 1:1
3.000 RPM MAX.



SPECIALS: NO PROBLEM



DOOSAN INFRACORE

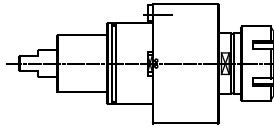
BMT-85

Models

PUMA 600/700/800

DN.000.600

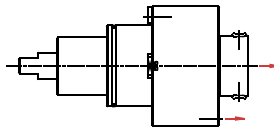
AXIAL



ER-50
RATIO 1:1
3.000 RPM MAX.

DN.005.600

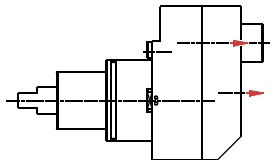
**AXIAL WITH
HIGH PRESSURE
COOLANT THROUGH**



HSK-63
RATIO 1:1
4.000 RPM MAX.

DN.006.600

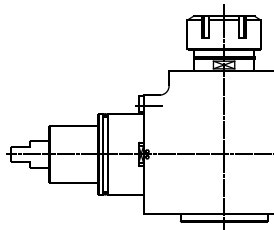
**AXIAL OFFSET WITH
HIGH PRESSURE
COOLANT THROUGH**



WELDON Ø14
RATIO 1:1
4.000 RPM MAX.

DN.010.600

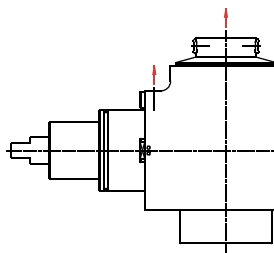
RADIAL



ER-50
RATIO 1:1
4.000 RPM MAX.

DN.016.600

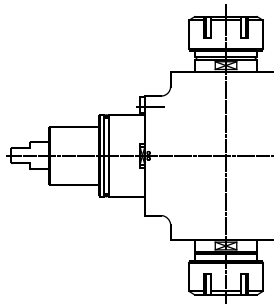
**RADIAL WITH
HIGH PRESSURE
COOLANT THROUGH**



HSK-63
RATIO 1:1
4.000 RPM MAX.

DN.008.600

**RADIAL DOUBLE
OUTPUT**



ER-50/ER-50
RATIO 1:1
4.000 RPM MAX.



SPECIALS: NO PROBLEM

TOOLING FOR **BARUFFALDI - BIGLIA - CMZ - DUPLOMATIC - EMCO - HAAS - INDEX - MAZAK - MIYANO - MORI SEIKI - NAKAMURA - OKUMA - SAUTER - SCHAUBLIN - SPINNER - ETC.** PLEASE ASK FOR LITERATURE

Rec del Molí 11-17 08105 SANT FOST DE CAMPSENTELLES - BARCELONA (SPAIN) TEL.: 34.93.593.36.00 - FAX.: 34.93.570.07.99 - Email.: comercial@madaula.com

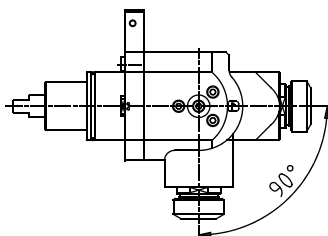




DOOSAN INFRACORE

DN.021.600

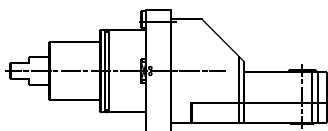
**RADIAL
ADJUSTABLE**



ER-40
RATIO 1:1
3.000 RPM MAX.

DN.040.600

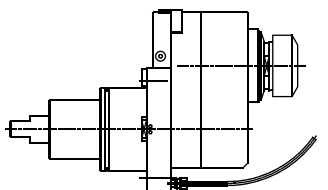
**WOODRUFF
KEY CUTTER**



ER-20A
RATIO 1:1
4.000 RPM MAX.

DN.050.600

"Y" AXIS ± 35 mm



ER-40
RATIO 1:1
3.000 RPM MAX.

BMT-85

Models

PUMA 600/700/800



DOOSAN INFRACORE

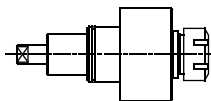
Models

BMT-45

LYNX 220

DN.000.220

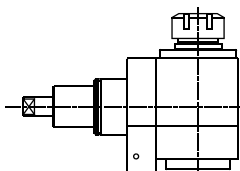
AXIAL



ER-25
RATIO 1:1
6.000 RPM MAX.

DN.010.220

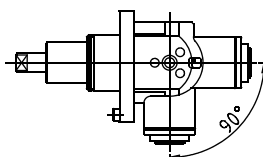
RADIAL



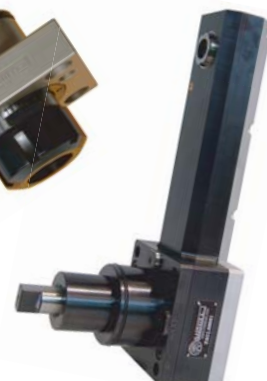
ER-25
RATIO 1:1
6.000 RPM MAX.

DN.021.220

**RADIAL
ADJUSTABLE**



ER-16A
RATIO 1:1
6.000 RPM MAX.



SPECIALS: NO PROBLEM





DOOSAN INFRACORE

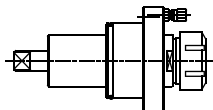
BMT-65

**PUMA 300
PUMA 2500SY
PUMA MX2000/2500**

Models

DN.000.300

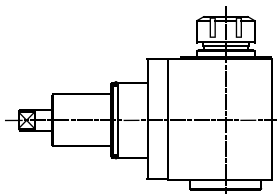
AXIAL



ER-32
RATIO 1:1
6.000 RPM MAX.

DN.010.300

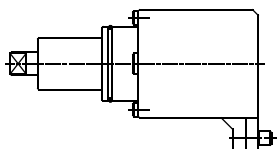
RADIAL



ER-32
RATIO 1:1
6.000 RPM MAX.

DN.026.300

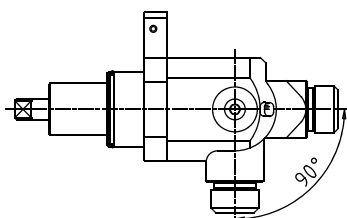
**AXIAL
OFFSET
SPEEDER**



ER-8
RATIO 1:2
9.000 RPM MAX.

DN.021.300

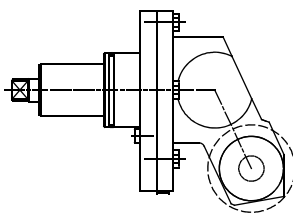
**RADIAL
ADJUSTABLE**



ER-25
RATIO 1:1
4.000 RPM MAX.

DN.030.300

**SAW-MILL
REDUCER**

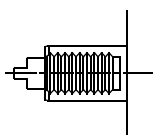


Ø22
RATIO 4:1
3.500 RPM MAX.

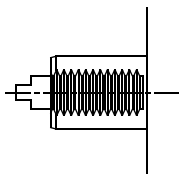


ALSO AVAILABLE:

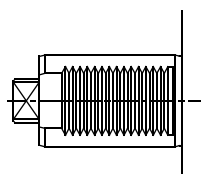
VDI-30
(PUMA 200 MS)



VDI-40
(PUMA 250 M/MS)



VDI-50
(PUMA 400, 550)



SPECIALS: NO PROBLEM

TOOLING FOR **BARUFFALDI - BIGLIA - CMZ - DUPLOMATIC - EMCO - HAAS - INDEX - MAZAK - MIYANO - MORI SEIKI - NAKAMURA - OKUMA - SAUTER - SCHAUBLIN - SPINNER - ETC.** PLEASE ASK FOR LITERATURE

Rec del Molí 11-17 08105 SANT FOST DE CAMPSENTELLES - BARCELONA (SPAIN) TEL.: 34.93.593.36.00 - FAX.: 34.93.570.07.99 - Email: comercial@madaula.com

