



**GANG
TOOLING
Ø 34**

STAR

Models:

**ECAS 12/20
SR 16/20RII
SR 20R-RII-RIII**

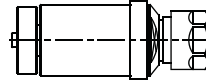
**SR 32J
SV 12/20/32
SV 32J-32JII**

STAR ref.

ST.000.34

331-50

AXIAL



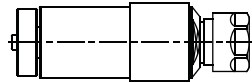
ER-16
RATIO 1:1
6.000 RPM MAX.



ST.000.34L

571-55

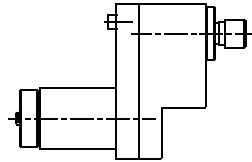
**AXIAL
LONG**



ER-16
RATIO 1:1
6.000 RPM MAX.

ST.001.34

**AXIAL
OFFSET**

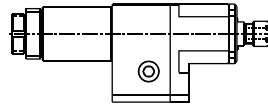


ER-11
RATIO 1:1
6.000 RPM MAX.



ST.002.34

**AXIAL
SPEEDER**

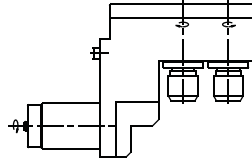


ER-11
RATIO 1:3.64
6.000 RPM MAX.

ST.008.34A

541-51

**RADIAL
2 SPINDLES**



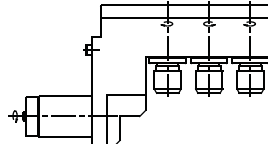
ER-16
RATIO 1:1
6.000 RPM MAX.



ST.008.34B

661-51

**RADIAL
3 SPINDLES**

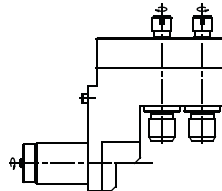


ER-16
RATIO 1:1
6.000 RPM MAX.

ST.008.34C

421-59

**RADIAL
4 SPINDLES**

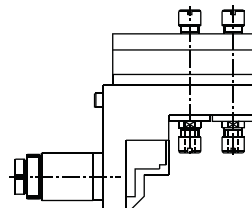


ER-11/ER-16
RATIO 1:1
6.000 RPM MAX.

ST.008.34D

661-59

**RADIAL
4 SPINDLES**



ER-11
RATIO 1:1
6.000 RPM MAX.



SPECIALS: NO PROBLEM



**GANG
TOOLING
Ø 34**

STAR

Models:

ECAS 12/20

SR 16/20RII

SR 20R-RII-RIII

SR 32J

SV 12/20/32

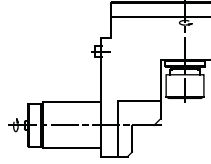
SV 32J-32JII

STAR ref.

ST.011.34

581-52

**RADIAL
SET-BACK**

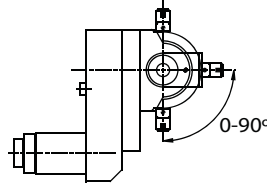


ER-16
RATIO 1:1
6.000 RPM MAX.



ST.021.34

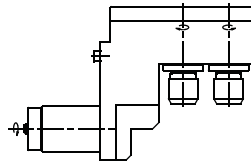
**RADIAL
ADJUSTABLE**



ER-8
RATIO 1:3
24.000 RPM MAX.

ST.029.34A

**RADIAL
2 SPINDLES
ADJUSTABLE**

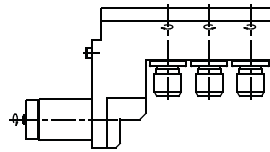


ER-16
RATIO 1:1
6.000 RPM MAX.



ST.029.34B

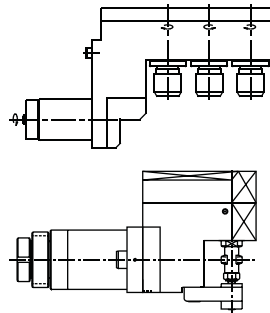
**RADIAL
3 SPINDLES
ADJUSTABLE**



ER-16
RATIO 1:1
6.000 RPM MAX.

ST.030.34

SAW-MILL



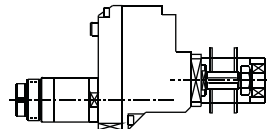
RATIO 1:1
6.000 RPM MAX.



ST.030.34D

541-54

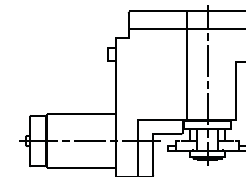
**AXIAL
SAW-MILL
DOUBLE**



RATIO 2.67:1
2.800 RPM MAX.

ST.034.34

**POLYGON
MAKER**



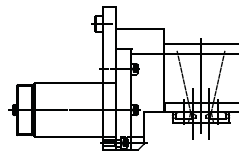
RATIO 1:1
6.000 RPM MAX.
(Optional RATIO 2:1)



ST.035.34

541-78

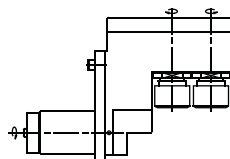
**THREAD
WHIRLING**



Ø10
RATIO 1.3:1
6.000 RPM MAX.

ST.051.34

**RADIAL DOUBLE
OUTPUT SWIVELING**



ER-16
RATIO 1:1
6.000 RPM MAX.

SPECIALS: NO PROBLEM

TOOLING FOR **DECO - CITIZEN - MAIER - ESCOMATIC - PFIFFNER - MANURHIN - WITECH - TSUGAMI - DMG - NEXTURN - HANWHA - BENZINGER - ETC.** PLEASE ASK FOR LITERATURE

Rec del Molí 11-17 08105 SANT FOST DE CAMPSENTELLES - BARCELONA (SPAIN) TEL.: 34.93.593.36.00 - FAX.: 34.93.570.07.99 - Email.: comercial@madaula.com





**GANG
TOOLING
Ø 22**

STAR

ECAS 12/20

SR 16/20RII

SR 20R-RII-RIII

SR 32J

KNC 20

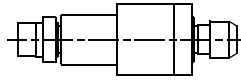
Models:

STAR ref.

ST.000.22A

541-61

AXIAL

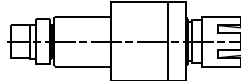


ER-11
RATIO 1:1
3.000 RPM MAX.

ST.000.22B

571-61

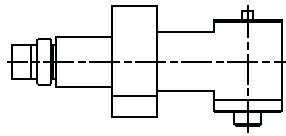
AXIAL



ER-16
RATIO 1:1
6.000 RPM MAX.

ST.014.22

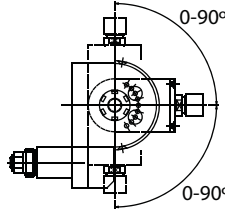
**RADIAL
REDUCER**



ER-8
RATIO 1.3:1
3.000 RPM MAX.

ST.021.22

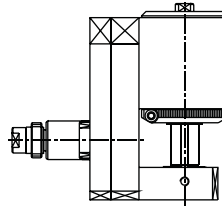
**RADIAL
ADJUSTABLE**



ER-11
RATIO 1:1
6.000 RPM MAX.

ST.030.22

SAW-MILL



Ø 13 / Ø 16
RATIO 2.18:1
5.000 RPM MAX.



**TURRET
TOOLING**

STAR

SV 12/20

KNC 16

KNC 20

SV 32J

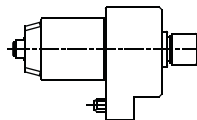
Models:

STAR ref.

ST.000.20A

221-50

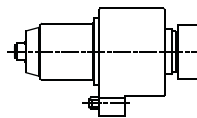
AXIAL



ER-16
RATIO 1:1
6.000 RPM MAX.

ST.000.20B

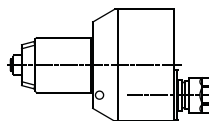
AXIAL



ER-25
RATIO 1:1
4.000 RPM MAX.
(COOLANT THROUGH)
OPTIONAL

ST.006.20

**AXIAL
OFFSET**



ER-16
RATIO 1:1
4.000 RPM MAX.
(COOLANT THROUGH)
OPTIONAL



SPECIALS: NO PROBLEM





**TURRET
TOOLING**

STAR

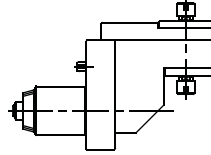
Models: **SV 12/20** **KNC 20**
KNC 16 **SV 32J**

STAR ref.

ST.008.20A

431-55

**RADIAL
2 SPINDLES**

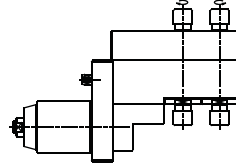


ER-11
RATIO 1:1
6.000 RPM MAX.



ST.008.20B

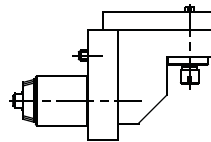
**RADIAL
4 SPINDLES**



ER-11
RATIO 1:1
6.000 RPM MAX.

ST.011.20

**RADIAL
SET-BACK**



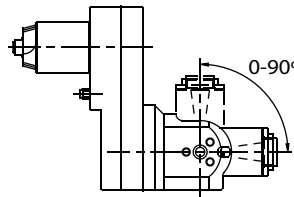
ER-11
RATIO 1:1
6.000 RPM MAX.



ST.021.20

221-61

**RADIAL
ADJUSTABLE**

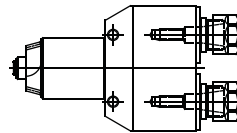


ER-16
RATIO 1:1
6.000 RPM MAX.

ST.023.20A

421-51

**AXIAL
DOUBLE
OUTPUT**

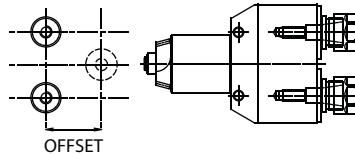


ER-16
RATIO 1:1
4.000 RPM MAX.
(COOLANT THROUGH)
OPTIONAL



ST.023.20B

**AXIAL
DOUBLE
OUTPUT
OFFSET**

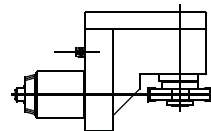


ER-16
RATIO 1:1.8
6.000 RPM MAX.
(COOLANT THROUGH)
OPTIONAL

ST.034.20

541-91

**POLYGON
MAKER**

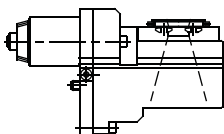


Ø 16
RATIO 1:1
6.000 RPM MAX.



ST.035.20

**THREAD
WHIRLING**



SPECIAL
RATIO 1.5:1
6.000 RPM MAX.

SPECIALS: NO PROBLEM



TOOLING FOR **DECO - CITIZEN - MAIER - ESCOMATIC - PFIFFNER - MANURHIN - WITECH - TSUGAMI - DMG - NEXTURN - HANWHA - BENZINGER - ETC.** PLEASE ASK FOR LITERATURE

Rec del Molí 11-17 08105 SANT FOST DE CAMPSENTELLES - BARCELONA (SPAIN) TEL.: 34.93.593.36.00 - FAX.: 34.93.570.07.99 - Email.: comercial@madaula.com



**TURRET
TOOLING**

STAR

Models:

**ECAS 20T
ECAS 32T**

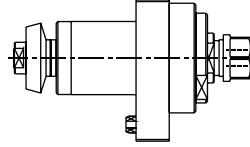
**KNC 32
SV32**

STAR ref.

ST.000.32A

201-50

AXIAL



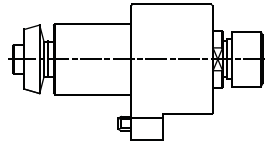
ER-16
RATIO 1:1
6.000 RPM MAX.



ST.000.32B

581-51

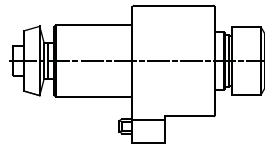
AXIAL



ER-20
RATIO 1:1
6.000 RPM MAX.

ST.000.32C

AXIAL



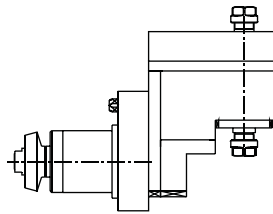
ER-25
RATIO 1:1
4.000 RPM MAX.
(COOLANT THROUGH)
OPTIONAL



ST.008.32

201-56

**RADIAL
DOUBLE
OUTPUT**

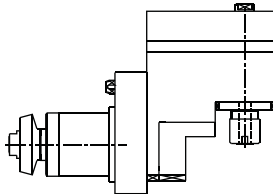


ER-11
RATIO 1:1
5.700 RPM MAX.

ST.011.32

201-52

**RADIAL
SET-BACK**

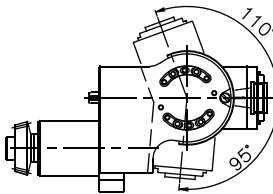


ER-16
RATIO 1:1
5.700 RPM MAX.



ST.021.32A

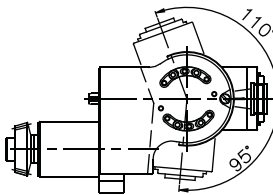
**RADIAL
ADJUSTABLE**



ER-16
RATIO 1:1
8.000 RPM MAX.

ST.021.32B

**RADIAL
ADJUSTABLE**



ER-20
RATIO 1:1
8.000 RPM MAX.



SPECIALS: NO PROBLEM



**TURRET
TOOLING**

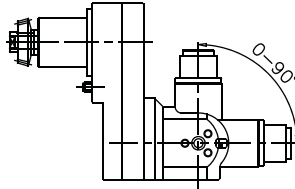
STAR

Models: **ECAS 20T** **ECAS 32T** **KNC 32** **SV32**

STAR ref.

ST.021.32C

**RADIAL
ADJUSTABLE**

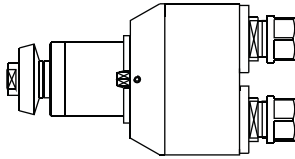


ER-20
RATIO 1:1
6.000 RPM MAX.

ST.023.32

431-51

**AXIAL
DOUBLE
OUTPUT**

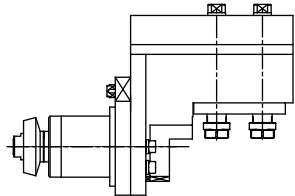


ER-16
RATIO 1:1
6.000 RPM MAX.

ST.029.32

581-55

**RADIAL
DOUBLE
OUTPUT
ADJUSTABLE**

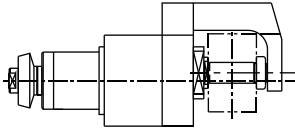


ER-11
RATIO 1:2
6.000 RPM MAX.

ST.030.32

431-54

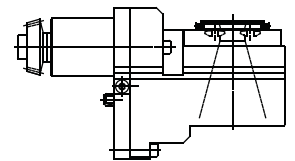
SAW-MILL



RATIO 1:0.298
2.000 RPM MAX.

ST.035.32

**THREAD
WHIRLING**

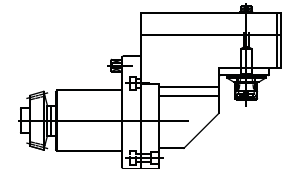


SPECIAL
RATIO 1.5:1
6.000 RPM MAX.

ST.051.32A

421-55

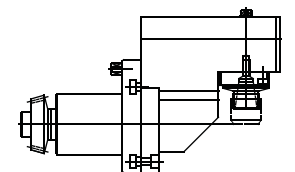
**RADIAL
SWIVELING
± 90°**



ER-11
RATIO 1:1
6.000 RPM MAX.

ST.051.32B

**RADIAL
SWIVELING
± 90°**



ER-16
RATIO 1:1
6.000 RPM MAX.



SPECIALS: NO PROBLEM



TOOLING FOR **DECO - CITIZEN - MAIER - ESCOMATIC - PFIFFNER - MANURHIN - WITECH - TSUGAMI - DMG - NEXTURN - HANWHA - BENZINGER - ETC.** PLEASE ASK FOR LITERATURE

Rec del Molí 11-17 08105 SANT FOST DE CAMPSENTELLES - BARCELONA (SPAIN) TEL.: 34.93.593.36.00 - FAX.: 34.93.570.07.99 - Email.: comercial@madaula.com