

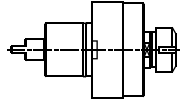


MORI SEIKI

Models **NL 1500/2000/2500/3000**

MS.000.NLA

AXIAL

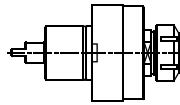


ER-32
RATIO 1:1
6.000 RPM MAX.



MS.000.NLB

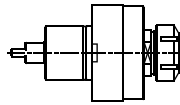
AXIAL



ER-40
RATIO 1:1
6.000 RPM MAX.

MS.005.NL

**AXIAL WITH
HIGH PRESSURE
COOLANT THROUGH**

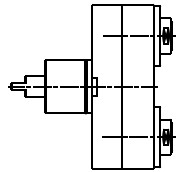


ER-40
RATIO 1:1
6.000 RPM MAX.
10 bar MAX.



MS.023.NL

**AXIAL DOUBLE
OUTPUT**

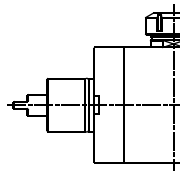


ER-25A
RATIO 1:1
4.000 RPM MAX.



MS.010.NL

RADIAL

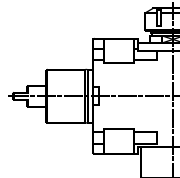


ER-40
RATIO 1:1
6.000 RPM MAX.



MS.016.NL

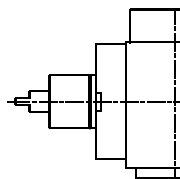
**RADIAL WITH
HIGH PRESSURE
COOLANT THROUGH**



ER-40
RATIO 1:1
6.000 RPM MAX.
70 bar MAX.

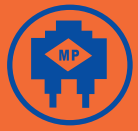
MS.016.NLC4

**RADIAL CAPTO C4
HIGH PRESSURE
COOLANT THROUGH**



CAPTO C4
RATIO 1:1
6.000 RPM MAX.
70 bar MAX.

SPECIALS: NO PROBLEM

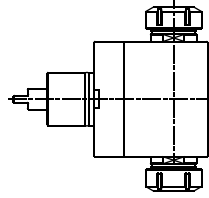


MORI SEIKI

Models **NL 1500/2000/2500/3000**

MS.008.NL

RADIAL DOUBLE OUTPUT

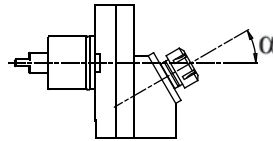


ER-40
RATIO 1:1
6.000 RPM MAX.



MS.012.NL

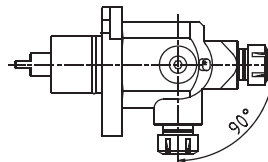
FIXED ANGLE (ANY ANGLE)



ER-25
RATIO 1:1
4.000 RPM MAX.

MS.021.NL

RADIAL ADJUSTABLE

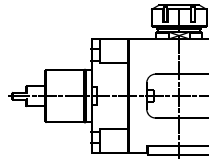


ER-25
RATIO 1:1
4.000 RPM MAX.



MS.051.NLA

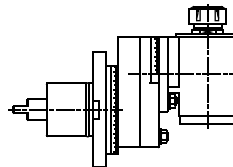
RADIAL SWIVELING



ER-40
RATIO 1:1
4.000 RPM MAX.

MS.051.NLB

RADIAL SPECIAL DOUBLE SWIVELING

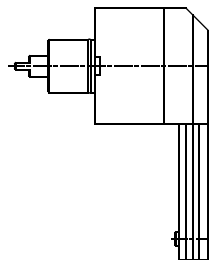


ER-25
RATIO 1:1
4.000 RPM MAX.



MS.040.NL

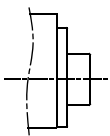
SPECIAL FOR INTERNAL WORKS



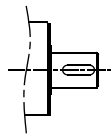
ER-11
RATIO 1:1.5
3.000 RPM MAX.



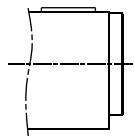
SPECIAL SPINDLE EXECUTIONS:



WELDON



SHELL END MILL



CAPTO

SPECIALS: NO PROBLEM

TOOLING FOR **BARUFFALDI - BIGLIA - CMZ - DOOSAN - DUPLOMATIC - EMCO - HAAS - INDEX - MAZAK - MIYANO - NAKAMURA - OKUMA - SAUTER - SCHAUBLIN - SPINNER - ETC.** PLEASE ASK FOR LITERATURE

Rec del Molí 11-17 08105 SANT FOST DE CAMPSENTELLES - BARCELONA (SPAIN) TEL.: 34.93.593.36.00 - FAX.: 34.93.570.07.99 - Email: comercial@madaula.com

