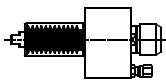




HANWHA

HW.000.STL32H

AXIAL

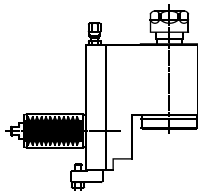


STL32H

ER-20
RATIO 1:1
6.000 RPM MAX.

HW.010.STL32H

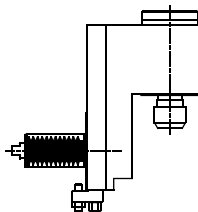
RADIAL



ER-20
RATIO 1:1
6.000 RPM MAX.

HW.011.STL32H

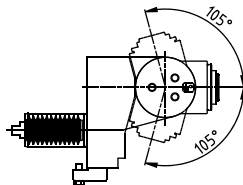
**RADIAL
SET-BACK**



ER-20
RATIO 1:1
6.000 RPM MAX.

HW.021.STL32H

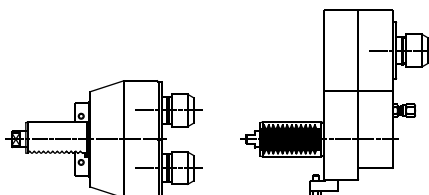
**RADIAL
ADJUSTABLE**



ER-16
RATIO 1:1
6.000 RPM MAX.

HW.023.STL32H/A

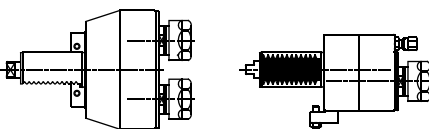
**AXIAL
2 SPINDLES**



ER-20
RATIO 1:1
6.000 RPM MAX.

HW.023.STL32H/B

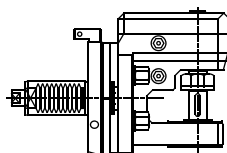
**AXIAL
2 SPINDLES**



ER-20
RATIO 1:1
6.000 RPM MAX.

HW.030.STL32H

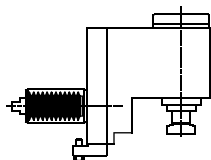
**GEAR
HOBBING**



ø 16
RATIO 1:1
6.000 RPM MAX.

HW.034.STL32H

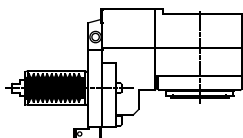
**POLYGON
MAKER**



POLYGON TOOL
RATIO 1:1
6.000 RPM MAX.

HW.035.STL32H

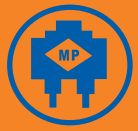
**THREAD
WHIRLING ± 15°**



WHIRLING HOLDER
RATIO 2:1
6.000 RPM MAX.

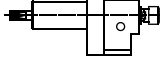
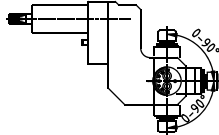
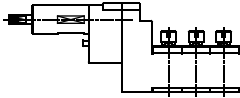
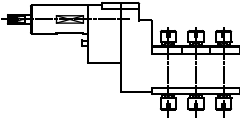
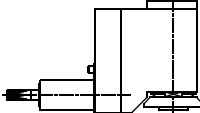
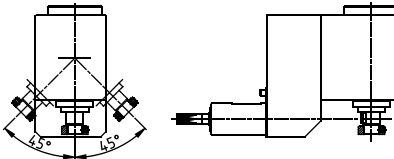
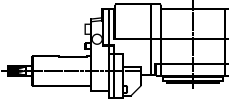
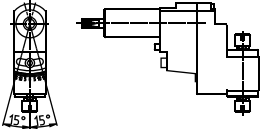
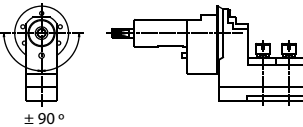
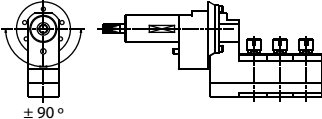
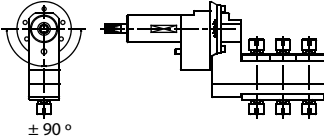


SPECIALS: NO PROBLEM



HANWHA

CROSS DRILL TOOLING

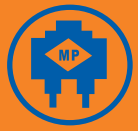
HW.002.XD20H	AXIAL SPEEDER		ER-11 RATIO 1:3 15.000 RPM MAX.
HW.021.XD20H	RADIAL ADJUSTABLE		ER-11 RATIO 1:1 8.000 RPM MAX.
HW.029.XD20H/3	RADIAL 3 SPINDLES		ER-11 RATIO 1:1 8.000 RPM MAX.
HW.029.XD20H/6	RADIAL 6 SPINDLES		ER-11 RATIO 1:1 8.000 RPM MAX.
HW.030.XD20H/B	SAW-MILL		ø 16 RATIO 3:1 4.000 RPM MAX.
HW.030.XD20H/C	ADJUSTABLE SAW-MILL		CUTTER HOLDER RATIO 3:1 6.000 RPM MAX.
HW.035.XD20H	THREAD WHIRLING ± 15°		WHIRLING HOLDER RATIO 1:1 8.000 RPM MAX.
HW.051.XD20H/D	RADIAL ADJUSTABLE		ER-11 RATIO 1:1 9.500 RPM MAX.
HW.051.XD20H/2	RADIAL ADJUSTABLE 2 SPINDLES		ER-11 RATIO 1:1 8.000 RPM MAX.
HW.051.XD20H/3	RADIAL ADJUSTABLE 3 SPINDLES		ER-11 RATIO 1:1 8.000 RPM MAX.
HW.051.XD20H/6	RADIAL ADJUSTABLE 6 SPINDLES		ER-11 RATIO 1:1 8.000 RPM MAX.

XD20/26H XD20/26J



SPECIALS: NO PROBLEM

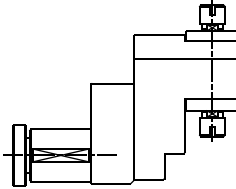




HANWHA

BACK END TOOLING

HW.008.XD20H **RADIAL
DOUBLE
OUTPUT**

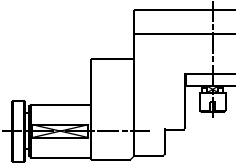


**XD20/26H
XD20/26J**

ER-11
RATIO 1:1
9.500 RPM MAX.



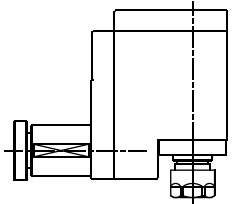
HW.011.XD20H **RADIAL
SET-BACK**



ER-11
RATIO 1:1
9.000 RPM MAX.



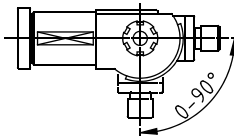
HW.014.XD20H **RADIAL
SET-BACK
REDUCER**



ER-16
RATIO 1.5:1
9.000 RPM MAX.

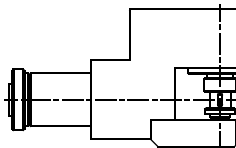


HW.021.XD20H **RADIAL
ADJUSTABLE**



ER-11
RATIO 1:1
8.000 RPM MAX.

HW.030.XD20H/A **SAW-MILL**



ø 13
RATIO 1:1
6.000 RPM MAX.



SPECIALS: NO PROBLEM

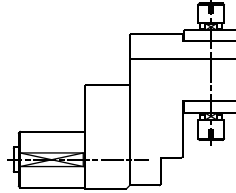


HANWHA

SL 26/32/35 HPII
SL 20/26/32 HPD
SL 20/26 S - SL 20/26 H

HW.008.SL35

**RADIAL
DOUBLE
OUTPUT**

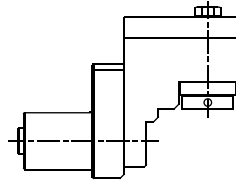


ER-11
RATIO 1:1
5000 RPM MAX.



HW.011.SL35

**RADIAL
SET-BACK**

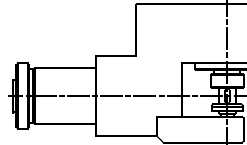


∅ 10
RATIO 1:1
5000 RPM MAX.



HW.030.SL32HP

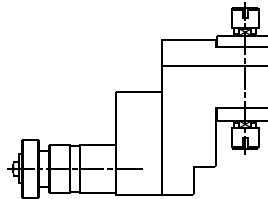
SAW-MILL



∅ 10
RATIO 1:1
6.000 RPM MAX.

HW.008.SL20/26S

**RADIAL
DOUBLE
OUTPUT**

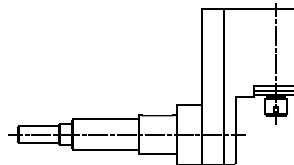


ER-11
RATIO 1:1
9.500 RPM MAX



HW.011.SL20/26

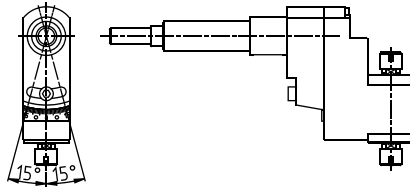
**RADIAL
SET-BACK**



ER-11
RATIO 1:1
9.500 RPM MAX.

HW.051.SL20/26

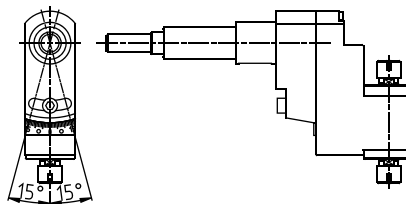
**RADIAL
ADJUSTABLE**



ER-11
RATIO 1:1
9.500 RPM MAX

HW.051.SL20/26H

**RADIAL
ADJUSTABLE**



ER-11
RATIO 1:1
9.500 RPM MAX.



SPECIALS: NO PROBLEM



TOOLING FOR **STAR - DECO - CITIZEN - MAIER - ESCOMATIC - PFIFFNER - MANURHIN - TSUGAMI - DMG - NEXTURN - WITECH - BENZINGER - ETC.** PLEASE ASK FOR LITERATURE

Rec del Molí 11-17 08105 SANT FOST DE CAMPSENTELLES - BARCELONA (SPAIN) TEL.: 34.93.593.36.00 - FAX.: 34.93.570.07.99 - Email.: comercial@madaula.com